

WHITBURN CHURCH OF ENGLAND ACADEMY

An Academy with Specialist Status in Maths and Computing



Spring 2016



Prince Bishops
Teaching School Alliance
Growing together



Maths &
Computing



National Teaching School
designated by



National College for
Teaching & Leadership

OPTIONS
BOOKLET

Options Timeline - Key Dates

JANUARY 2016						
S	M	T	W	T	F	S
					1	2
3	4	5	6	7	8	9
10	11	12	13	14	15	16
17	18	19	20	21	22	23
24	25	26	27	28	29	30
31						

FEBRUARY 2016						
S	M	T	W	T	F	S
	1	2	3	4	5	6
7	8	9	10	11	12	13
14	15	16	17	18	19	20
21	22	23	24	25	26	27
28	29					

W/b 18th January

Wednesday 3rd February

Monday 8th February

Thursday 11th February

Thursday 25th February

End of summer term

Careers Co-ordinator options talks begin in registration

Year 9 Options Assembly

Options Booklet on Website

Options Evening - *Heads of Subject are available between 4.30pm and 5.45pm in 'Food for Thought' on a drop-in basis. Options talk at 6pm*

Final deadline for forms on TRD

Option allocations complete

You are approaching a highly significant time in your education at Whitburn Church of England Academy; by the end of the spring term you will have considered and chosen the courses you will take for your GCSEs.

During the spring term you should discuss your ideas with your parents / carers to help clarify your thoughts about which options to choose. We hope that you will seek help and advice about your GCSEs. Your Head of Learning and Form Tutor will be very pleased to discuss any issues with you. Your subject teachers will be happy to give you information about their subject areas.

HOW SHOULD YOU CHOOSE?

As pupils in Year 9, it is quite natural that you may be undecided about your future plans and many of you will, without doubt, change your minds over the next two years.

You should therefore consider the following points:

- Keep your career options open by choosing **AS BROAD A RANGE OF SUBJECTS AS POSSIBLE**.
- Within the bounds of the option choices available, choose subjects that you **ENJOY** or in which you are **SUCCESSFUL** (preferably both).
- **LISTEN** to the advice of subject teachers, especially where new subjects are involved.
- If you do have definite career/job plans at this stage find out if there are certain subjects that would be **HELPFUL** to you to study.
- Don't take or drop subjects for the wrong reasons, and don't pay too much attention to the 'advice' given by friends: **WHAT SUITS THEM MAY WELL NOT SUIT YOU**. You also may not end up in the same class.
- Do **TALK** to pupils who are in Year 10 or 11 about a specific subject you might wish to study.
- Do get all the information you can from this booklet and by **ASKING QUESTIONS** before deciding on your subjects.
- Try not to choose a subject just because you **LIKE** (or dislike) the teacher. You may have different teachers next year.
- Do think about your **SKILLS** and how you work and try to match these with the different demands of the different subjects.
- Subjects have different amounts of marks awarded for examinations and for controlled assessments. Do think carefully about **HOW YOU BEST WORK** when making your selection of subjects.
- If you have any doubts or need any help, **ASK A TEACHER**.

THINGS TO THINK ABOUT WHEN CHOOSING YOUR OPTIONS

Making a Balanced Choice

It is important that you continue to study a variety of courses. Not only will this contribute to your general education, it will also mean that doors to a wide number of careers and further study will remain open to you.

A limited number of universities have indicated that continuing with a language subject at GCSE is of benefit for application for a wide range of courses. Pupils should take this into account when making their selection of subjects.

English Baccalaureate

The current Government believes that all schools should offer pupils a broad range of academic subjects and the ENGLISH BACCALAUREATE (EBacc) promotes this aspiration. Year 9 pupils and their families will need to consider these developments when making options choices this year. The current Year 9 will be the fourth cohort who can make informed GCSE option choices in order to gain the EBacc. From the current Year 7 onwards, the expectation will be that almost all pupils will take this subject combination.

The ENGLISH BACCALAUREATE is a progress measure to recognise pupils **achieving at least 5 good passes (Grade 5 and above)** across a core of selected academic subjects, which **MUST** include English, Mathematics, two Sciences, one Humanities subject and one Modern Foreign Language. The EBacc is not, at present, a requirement for University application. There is no additional exam and pupils will be awarded the EBacc if they attain grade 5 or higher in the appropriate combination of subjects. You will be able to study the following subjects in order to achieve the ENGLISH BACCALAUREATE:

- GCSE English Language and Literature
- GCSE Mathematics
- GCSEs in 2 Sciences - either GCSE Combined Science, Computer Science or Separate Science (Biology, Chemistry and Physics)
- GCSE in Geography or GCSE History
- GCSE in Spanish or GCSE French

Any choice of options should be made on the basis of taking a balanced range of GCSE courses, considering possible future study, career options and, of course, subjects that you enjoy and have an aptitude for.

For a **BALANCED** range of subjects, we ask that you opt for **one** of the following:-

A HUMANITIES OPTION - Geography or History

OR

A LANGUAGES OPTION - French or Spanish

OR

COMPUTER SCIENCE *if eligible*



Opting for at least one of the above will provide you with a wide range of opportunities for future studies and career decisions.

Every effort is made to enable pupils to study the subjects that they choose, but it should be noted that if any option is undersubscribed, it will not run.

We build our Key Stage 4 timetable around the pupils' choices made on Tutor Review Day. Changes to choices after this date **cannot be accommodated** so it is important that pupils are confident about their choices by this deadline.

Due to curriculum changes, all pupils in Year 9 have already started to follow the **SEPARATE SCIENCE** course. However, the decision to enter you for either Separate Sciences or for GCSE Combined Science will be taken **following your performance in Years 9, 10 and 11**. As the Separate Science course is very challenging, pupils will need to demonstrate that they are coping with the higher academic demands of this throughout Years 9, 10 and 11.

Pupils wishing to opt for **COMPUTER SCIENCE** need to demonstrate that they have attained at least a Grade 5 in Maths by Tutor Review Day due to the challenging nature of this qualification.

LOOKING AHEAD

In two years time you will be making another vital decision about your future. Listed below are the types of courses which at present can be taken after GCSE:

A Level

Entry criteria for 'A Level' study is typically 5 GCSE's or more at grade 6 or above; due to the changes to the qualifications it is anticipated that pupils will choose 3 subjects to study at 'A' Level. These normally require two years study and will be assessed during the summer of Year 13. Some may also choose to study a fourth subject as an 'AS' level qualification. Sixth Forms and post 16 providers have specific requirements for each particular course they offer; our current prospectus provides further details on the Academy website

www.whitburncofeacademy.org

A levels are the traditional route to Higher Education and pupils wishing to go to University should study 3 'A' Levels. Choices made at GCSE can affect what you go on to study later on, so you need to give it careful thought. Usually, if you think you might like to take a subject at 'A' level, you should also choose to study that subject at GCSE. There are also several 'new' subjects available at 'A' Level that can be taken without any previous study; these include Psychology, Sociology, and Philosophy and Ethics. Those pupils targeting a future place at one of the 'Russell Group' Universities (the 24 leading Universities in the UK) should check specific courses for entry requirements as these can require a language and/or humanities subject at GCSE.

Vocational Courses

These can be studied over one or two years and are more practical based; these are usually delivered by Colleges rather than school Sixth Forms.

Apprenticeships

Apprenticeships give you the opportunity to gain a recognised qualification and develop professional skills, while earning a salary. Mr Moore, our Careers Co-ordinator, provides impartial careers guidance advice and has further information about apprenticeships available at Level 2 and Level 3.

WHO CAN HELP YOU CHOOSE?

Help is available in a variety of ways. We hope that the work you have already done in school, for example in PSHE lessons, will be helpful. In addition, several people are able and willing to help:

- Subject teachers, who know your strengths and weaknesses in their subjects.
- Your Form Tutor and Head of Learning, who have an overall picture of your progress.
- Our Careers Co-ordinator, Mr Moore, who can provide specialist information and links to websites such as Kudos.
- Mr Craggs, the Head of Sixth Form.
- Any teacher you regard as an 'adviser'; they may know you well enough to be sympathetic and to help you sort out any problems.
- Parents/carers and other relatives.

It's not easy to make decisions about your future - this is why help is available and important. Don't feel that you have to 'get on with it' by yourself - you don't!

GCSE Courses

In Year 9 you have already started your GCSE courses in Separate Science, English Language, English Literature, Mathematics and RE. For your GCSEs all assessment continues to be **linear** in structure, so that examinations are taken at the **end** of the course. Additional marks will be awarded for spelling, punctuation and grammar (SPaG) for GCSEs in English Literature, Geography, History and Religious Studies. You will take the new GCSEs in the majority of subjects which will be graded from 9 (highest) to 1. Summer 2018 will be the last exams for GCSEs graded A*-G in some subjects such as ICT, Media Studies, Graphic Products and Textiles.

Where subjects have non-exam assessment, these are usually worth between 20% (Computer Science) and 60% (Music).

Non-exam assessment

The term 'non-exam assessment' covers a range of different forms of assessment. Non-exam assessments are not necessarily 'internally' or teacher-marked nor undertaken over an extended period of time. A performance may, for example, be undertaken under timed conditions and marked by a visiting exam board assessor, but because not all pupils will be assessed simultaneously it does not fall within the definition of 'assessment by exam'.

Will all GCSEs have non-exam assessment?

No. The percentage depends on the range of skills to be assessed and the most effective way of assessing them. The breakdown for 2018 is shown below:

- English Language, English Literature, Mathematics, Biology, Chemistry, Physics, Combined Science, Geography, History and Religious Studies have no non-exam assessment.
- Computer Science has 20% non-exam assessment.
- Business Studies, French and Spanish have 25% non-exam assessment.
- GCSE Physical Education has 40% non-exam assessment.
- Food Preparation and Nutrition GCSE has 50% non-exam assessment.
- Media Studies, Graphic Products, Textiles, Music and ICT have 60% non-exam assessment.
- Art and Design has 100% non-exam assessment.

Full details of the new GCSE specifications can be found on the exam board websites. Most subjects follow AQA specifications except Computer Science (OCR) ICT, Business Studies and Music (Edexcel).

Tiers of Entry

Please note that for the new GCSE specifications, there will no longer be tiers of entry except in Maths, Modern Foreign Languages and the Sciences.

YEAR 10 and 11 CURRICULUM

Everyone will study these **COMPULSORY** subjects:

English Language

Mathematics

Science

Physical Education

English Literature

ICT *or* Computer Science

Religious Studies

Personal, Social and Health Education

In the core subjects, pupils are ranked in order of the Key Stage 3 level or GCSE grade achieved in their Year 9 examinations. This data is used to create new sets and six parallel top sets continue instead of four. Most pupils will remain in the same set throughout Years 10 and 11, although a small number may be moved when progress is reviewed.



Option Choices W, X and Y

You need to choose to study **FOUR OPTION SUBJECTS**, one from Block W, one from Block X and two from Block Y:

Block W 4 Hours	Block X 4 Hours	Block Y 5 Hours (Choose 2)
ICT	Business Studies	Art
Computer Science	Food Preparation & Nutrition	Business Studies
Vocational Learning (invitation only)	French *	French
	Graphic Products	Geography
	Media Studies	History
	Music	Media Studies
	Spanish *	Physical Education GCSE
	Textiles	Spanish
* If this MFL was studied in Year 9		Vocational Learning (invitation only)

In order to ensure as many as possible get their first option choices, it is necessary to shuffle pupils from P band to Q band and vice versa. This happens every year and, as sets are changed at the start of Year 10 too, pupils quickly settle into their new classes.

KEY STAGE 4 SUBJECTS

ART

Fine Art GCSE is an enjoyable yet demanding course aimed at pupils who have an interest in being creative, especially painting and drawing. Good organisational skills are needed to excel at this course.



By studying this course, you will:

- learn how to **research** a theme and how to improve your artistic skills.
- study historical and modern **artists, crafts people and designers**.
- learn how to **develop ideas** through experimenting with a variety of materials such as painting, drawing, mixed media, digital photography, creative textiles and possibly 3D.
- learn how to **create** a large personal piece of work based on your own research and ideas.

This course has two components:

- **Portfolio (60%)** is made up of your artwork taken from 4 projects you do in Year 10 and Year 11: Experiments; Portraits; Random; Mock Examination.
- **Controlled Test (40%)** is set by AQA and issued to you in January of Year 11. You will have 9 weeks to create a project then 10 hours to make a 'Final Piece'. The 10 hours is spread across two full days and you will be off timetable. This project is the Controlled Test.



Post 16 Progression can include A Level Art and Photography or BTEC Diplomas in Art & Design, Graphic Design and Photography. Career opportunities are many and varied, including film and media, Art therapy, fashion and textiles, computer game and theatre design, web design, animation, architecture and advertising to name a few.

CONTACT: *MRS DEMBRY*



BUSINESS STUDIES

The Business Studies GCSE course is covered in three units:

- Unit 1: Introduction to Small Business
- Unit 2: Investigating Small Business
- Unit 3: Building a Business



You will learn more about how small businesses are developed and discover how businesses promote themselves and keep their customers happy. You will learn how businesses manage both their finances and the people who work for them. You will link business theory to real life situations.

Assessment

Unit 1: Written examination paper with multiple-choice and objective test questions based on the unit.

Unit 2: Controlled assessment task. You will be asked to research a small business and use the information to answer a question set by the exam board.

Unit 3: Written examination paper where questions will be a mixture of multiple-choice, data response, short-answer, extended-writing and scenario-based questions. For example, you may be given details of a business and asked a few questions based on that business.

Post 16 Progression This can include studying A-levels in Business or Economics. Apprenticeships are often available in accountancy firms, retail businesses, insurance, banking and other financial areas. Business Studies and Economics can be studied to degree level, allowing you to specialise in areas such as international business, marketing, human resources management, global finance or economic development.

CONTACT: *MISS THIRLWELL*



DESIGN AND TECHNOLOGY

Within this subject, three different courses can be taken:

- Graphic Products - Legacy GCSE
- Textiles - Legacy GCSE
- Food Preparation and Nutrition - New GCSE



All Design and Technology courses are concerned with Designing and Making. However the major difference between them is the type of practical outcome which you can achieve.

Graphic Products and Textiles - Legacy GCSEs

During Year 10 pupils are developing skills and subject knowledge in preparation for the Controlled Assessment Unit. Pupils will be given 45 hours to complete the Controlled Assessment and will be assessed in the following areas:

- Investigating the design context
- Development of design proposals
- Making products
- Testing and evaluation
- Communication skills



As part of the Controlled Assessment Unit pupils will choose from a range of Design and Make briefs set by the examiner and experience a variety of materials/processes when making these. Pupils will be assessed through a Controlled Assessment Unit (60%) and a final 2 hour examination (40%).

In **Graphic Products** pupils will complete the following work:

- Great British Design Packaging Project: This will be based on the London Motor Show and Great Britain. It will combine creativity, 2D Design, Photoshop and hand drawing skills.
- A variety of 2D and 3D hand drawing skills, both technical and creative.
- Creating 'pop-up' mechanisms to enhance products.
- A range of focused practical tasks linked to topics such as Smart/modern materials, CAD CAM and vacuum forming.

In **Textiles** pupils will complete the following work:

- Designing and making a range of products including accessories, soft furnishings and clothing.
- Pupils will understand the properties of fabrics and their sources
- A range of construction processes.
- A range of decorative techniques.
- Related environmental, social and moral issues.
- Safety and health issues when working with fabrics and equipment.
- Methods of production and use of CAD and CAM.
- Consumer and market influences.

Food Preparation and Nutrition – New GCSE

This new *GCSE* is an exciting and creative course which focuses on practical cooking skills to ensure pupils develop a thorough understanding of nutrition, food sources and the working characteristics of food materials. This qualification focuses on nurturing practical cookery skills to give pupils a strong understanding of nutrition.

Food preparation skills are integrated into five core topics:

- Food, nutrition and health
- Food science
- Food safety
- Food choice
- Food provenance.

How GCSE Food Preparation and Nutrition is assessed

Pupils will be assessed through non examined practical tasks (50%) and a written examination (50%). The practical tasks include (i) a food investigation to develop understanding of the working characteristics, functional and chemical properties of ingredients and (ii) a food preparation assessment. This will involve the preparation, cooking and presentation of food, along with the application of nutrition; pupils will prepare, cook and present a final menu of three dishes within a single period of no more than three hours, planning in advance how this will be achieved.

Pupils will be expected to provide their own ingredients for Food Preparation and Nutrition GCSE lessons, though financial assistance may be available.

Post 16 Progression Many go on to study these subjects at A level, leading to further opportunities in Higher Education. Food Technology career possibilities include those in food marketing management, food product design, nutrition, catering, public health and hospitality business management. Graphic Products leads into a variety of careers such as those in web design, animation, games design and production, architecture, marketing and advertising.

CONTACT: *MISS MACK*



INFORMATION AND COMMUNICATION TECHNOLOGY and COMPUTER SCIENCE - COMPULSORY

In Key Stage 4, pupils have the choice of studying GCSE ICT or GCSE Computer Science. It is compulsory to study **one** of these options.



All of these options give pupils the ability to analyse, understand and control the technology that surrounds them. They learn standard ways of working, including how to use ICT in a legal and secure way. A qualification in ICT or Computer Science will develop skills in a variety of industry standard ICT applications and software.

COMPUTER SCIENCE

This demanding OCR course is aimed at pupils who have an interest in a career in computing, engineering or science. **Pupils need to have a keen interest in programming** and have attained a **grade 5** in Mathematics by **Tutor Review Day** in order to be considered for this course.

By studying this course, you will:

- develop an understanding of current and emerging technologies;
- acquire a knowledge of algorithms in programming and programming skills;
- make informed decisions about the use of ICT;
- develop computer programmes to solve problems.

This course has three components:

- Principles of Computer Science assessed through a written paper accounting for 40% of the GCSE grade.
- Computational Thinking assessed through a written paper accounting for 40% of the GCSE grade.
- A Non-Examination Assessment assessed through a piece of practical work set by the exam board accounting for 20% of the GCSE grade.

CONTACT: *MR MULFORD*

INFORMATION COMMUNICATION TECHNOLOGY

In this GCSE course (Edexcel) pupils will explore how digital technology impacts on the lives of individuals, organisations and society. Pupils learn about current and emerging technologies and the issues raised by their use. Pupils use a range of software and hardware tools to develop and evaluate digital products such as databases, podcasts, web pages and spreadsheets.

The course comprises of two units:

- Living in a Digital World. This relates to emerging technologies and their use. It is assessed through a written paper, accounting for 40% of the GCSE grade.
- Using Digital Tools, a practical Centre Assessed Unit, accounting for 60% of the GCSE grade.

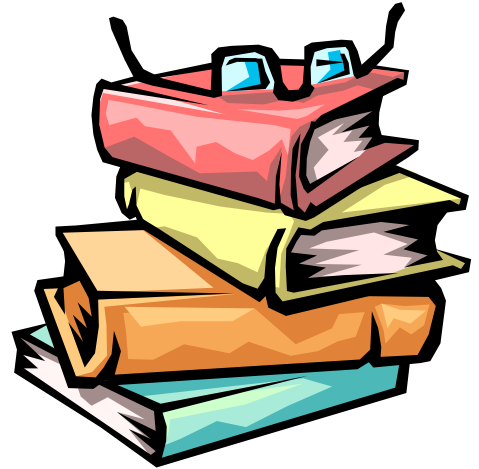


Post 16 Progression The world is becoming increasingly dominated by the use of ICT systems, which influence every aspect of our everyday lives. These courses will help provide you with the skills and knowledge that you will need as an active participant in this exciting and dynamic world. These courses will also provide you with an essential foundation for any further courses including those specific to the use of computers and new technology such as ICT, Applied ICT, Computer Science AS and A levels, as well as other vocational and employment based training courses.

CONTACT: *MR CLOUGHER*

ENGLISH LANGUAGE and ENGLISH LITERATURE - COMPULSORY

You will study an integrated course - AQA GCSE English Language / English Literature. This will generate two separate GCSE qualifications. The syllabus contains reading and writing elements as well as spoken language assessments. All pupils will be entered for both Language and Literature examinations. Both English Language and English Literature are linear, non-tiered courses culminating in examinations worth 100% of the overall grade.



There will be two written examination papers for Language and two for Literature. Additional marks will be awarded for spelling, punctuation and grammar (SPaG) throughout.

Post 16 Progression English is a requirement for the vast majority of Post-16 courses and employers look for it too. Having a GCSE in English will help you in all career paths in the future. These subjects can also help you towards a career in the legal profession, broadcasting, publishing, journalism, marketing, editorial work, copywriting, library work, acting, translating and teaching, to name a few.

If you fail to secure a grade 5 or above at GCSE, you now have to continue with this subject at Sixth Form or College. This also applies even if you are completing an apprenticeship or other work related training.

CONTACT: *MRS MAUGHAN*



FRENCH

You will follow the **AQA Specification GCSE in French**. This will build upon the language learnt in KS3.

This course is entirely assessed by final examinations. Listening, Speaking, Reading and Writing examinations will be taken at the end of year 11. In the French GCSE course, you will study three themes, divided into topics.

- **Identity and culture:**
 - *Me, my family and my friends*
 - *Technology in everyday life*
 - *Free time activities*
- **Local, national, international and global areas of interest**
 - *Home, town, neighbourhood and region*
 - *Social issues*
 - *Global issues*
 - *Travel and tourism*
- **Current and future study and employment**
 - *My studies*
 - *Life at school/ college*
 - *Education post-16*
 - *Jobs, career choices and ambitions*

The final examination tests four skill areas:

- Paper 1: Listening (25% of the overall GCSE): written exam
 - Section A: questions in English, to be answered in English or non-verbally
 - Section B: questions in French, to be answered in French or non-verbally
- Paper 2: Speaking (25% of the overall GCSE): non-exam assessment
 - Role-play
 - Conversation around a photocard
 - General conversation

- Paper 3: Reading (25% of the overall GCSE): written exam
 - Section A: questions in English to be answered in English or non-verbally
 - Section B: questions in French to be answered in French or non-verbally
 - Section C: translation from French into English
- Paper 4: Writing (25% of the overall GCSE)
 - Foundation Tier
 - Question 1: message (response to a photo)
 - Question 2: short passage (4 bullet points)
 - Question 3: translation from English into French
 - Question 4: structured writing task
 - Higher Tier
 - Question 1: structured writing task
 - Question 2: open ended writing task
 - Question 3: translation from English into French

Post 16 Progression Languages can be studied to A-level and to degree level. Careers include interpreting, translating or teaching. However, as many jobs now require people to speak more than one language, being able to do so will increase your employability. Some universities in the future *may* require the English Baccalaureate, which includes a grade 5 or above in MFL GCSE for entry.

CONTACT: *MONSIEUR LE GOFF*

GEOGRAPHY

This GCSE course is divided into three units:

Unit 1: Living with the physical environment - you will study topics such as 'The challenge of natural hazards', 'The living world' and 'Physical landscapes in the UK'.

Unit 2: Challenges in the human environment - you will study topics such as 'Urban issues and challenges', 'The changing economic world' and 'The challenge of resource management'.

Unit 3: Geographical applications - this involves issue evaluation, fieldwork and geographical skills

Assessment

You will sit three examination papers (one each for Units 1, 2 & 3). Paper 1 and 2 are each worth 35%, so comprise 70% of the total marks. The other 30% of the marks are gained from Paper 3.

Post 16 Progression The skills you develop in your geographical studies make you of potential interest to a wide range of employers as it is a much respected academic subject. Associated future careers include environmental and transport consultancy, surveying, cartography and architecture. In addition many geographers move into finance, law, accountancy and marketing.

CONTACT: *MRS HUSBAND*



HISTORY

Component 1: Understanding the Modern World

Section A: Period Studies

America, 1920-1973: Opportunity and inequality

Section B: Wider World Depth Studies

Conflict and tension, 1918-1939



Component 2: Shaping the Nation

Section A: Thematic Study

Britain: Power and the people: c1170 to the present day

Section B: British depth studies including the historical environment

Elizabethan England, c1568-1603

Assessment

Component 1: Written exam worth 50% of the total marks.

Component 2: Written exam worth 50% of the total marks.

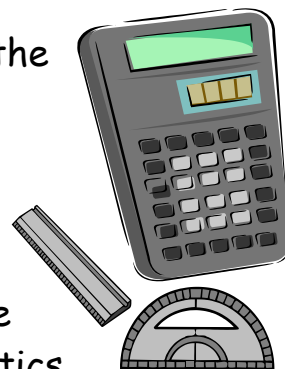
Post 16 Progression History can be studied at A level, but also prepares pupils for studying other subjects such as Sociology. History is a much respected academic subject that can lead to any job that requires good research skills, good verbal and written communication skills and an understanding of people.

CONTACT: *MR LIDDLE*

MATHEMATICS - COMPULSORY

Mathematics is an essential skill in daily life as it is required to manage personal finances and assist in problem solving.

Pupils will be following a linear course which will be examined at the end of two years. The advantage of following a linear course is that the content can be taught in any order to help pupils make connections across the different topic areas of mathematics and also there is a much lower burden of assessment throughout the course. This means that pupils are generally more focused and mature by the time they come to sit their Mathematics exam.



Maths is for everyone. It will develop your problem-solving and reasoning skills, as well as your ability to use and apply standard techniques. The course also encourages you to develop confidence in, and a positive attitude towards mathematics and to recognise the importance of mathematics in your own life and to society.

Assessment is by three written examination papers at the end of the course; two calculator papers and one non-calculator. The topic areas are Number, Algebra, Geometry and Measures, Ratio, Proportion and Rates of Change, Statistics and Probability. There are two tiers of entry.

Post 16 Progression It has been proven that studying mathematics helps to increase your chances of future employment as most jobs require a basic level of mathematical competency. Furthermore GCSE Mathematics is an essential entry requirement for many Post-16 courses. **If you fail to secure a grade 5 or above at GCSE, you now have to continue with this subject at Sixth Form or College. This also applies even if you are completing an apprenticeship or other work related training.** It prepares you for A-level Mathematics and Science courses, as well as other subjects which involve statistics and numeracy, i.e. Economics, PE and Geography. Mathematics can also be studied to degree level, either as a stand-alone subject or as part of a course such as electronics, engineering and computer science.

CONTACT: *MRS BARTCH*

MEDIA STUDIES

In this GCSE course you will learn to:

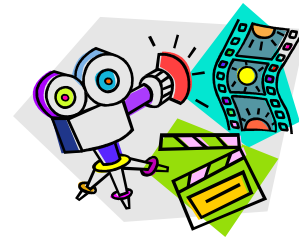
- Respond critically and analytically to a range of mass media texts
- Investigate the nature of media consumption by different audiences
- Enhance your skills in the planning and creation of media products
- Engage with the developing world of media technologies



There are two units:

Unit 1: Investigating the Media

Unit 2: Understanding the Media



Assessment

Unit 1 is assessed through a written paper based on a pre-released topic with guidance and stimuli (40% of total mark); for you the topic will be Serial Television Drama. Unit 2 consists of a variety of controlled assessments set by AQA and is worth 60% of the total mark.

You will work in small groups and 'in role' to create media texts. You will develop a practical production in one area and at least one of the topics of study must involve the moving image. This specification includes the study of video games as media texts.

There are links with English especially in the study of media texts in the English Language exam and there are also strong links with ICT and the involvement of modern technology in media production.

Post 16 Progression Some go on to study A-level Media Studies. However this course gives you a valuable insight into media related work such as advertising, digital manipulation and web design, as well as the newspaper and magazine industries.

CONTACT: *MR SMAILES*

MUSIC

You will learn how to improve your performing skills and, through work in composing, gain an insight into how music is constructed from initial ideas through to the finished product. You will also be expected to analyse music in a variety of styles through generic listening questions and detailed study of 8 set works, two works for each of the following categories: Instrumental Music 1700 - 1820, Vocal Music, Music for Stage and Screen and Fusions.



There are 3 units:

Unit 1: Performing Music (30%) - You will produce both a solo and an ensemble performance which will be recorded and assessed in the academic year in which you will be awarded the qualification. The performances must last around four minutes in total and may be on any instrument and in any style. The standard level of performance is around ABRSM (or equivalent examination board) grade 2 to 3 and continual practice throughout the course is required. Controlled assessment conditions will apply to this unit.

Unit 2: Composing Music (30%) - You will produce two compositions; one to a set brief from the examination board and one of your own choice. The combined length of the two pieces will be a minimum of three minutes. Controlled assessment conditions will apply to this unit.

Unit 3: Music - Listening and Appraising (40%) - This is an examination externally set and marked.

Post 16 Progression Music is a good preparation and solid foundation for further study in Music and Music Technology, as well as being recognised by 'Russell Group' Universities. It can lead to careers in the music industry, publishing, teaching and entertainment, or any job that involves communication and expressive skills. Your listening skills will enhance the aural perception needed in language examinations. Your performing skills will give you confidence in playing to an audience; useful if you intend to pursue a career in performing arts, business or law.

CONTACT: *MR ROSE*

PERSONAL, SOCIAL & HEALTH EDUCATION - COMPULSORY



This is not a GCSE course. Throughout the programme you are taught by your Form Tutors and specialist speakers where appropriate. Elements in this course will include Health Education, Careers Education, Personal Development, SRE and Citizenship.

You will be encouraged to develop your confidence, independent learning skills and to take on responsibility. You will also be encouraged to engage in group and class discussions, developing good relationships and to respect diversity between people. You will also be taught how to develop a healthy, safe lifestyle and economic and financial awareness.

Careers Education is an important part of this course and you will develop your own Independent Learning Plan (ILP). Preparation for Work Experience will take place and time will also be given so that you can negotiate GCSE and learning targets.

You will produce a Progress File which will provide evidence of your academic and non - academic progress which will support you in your post-16 choices and provide useful evidence to show future employers.

The PSHE programme will run alongside your long registration activities and assembly topics, therefore you will be able to create a greater understanding of the topics covered and develop your learning and self-reflection skills.

You will develop enterprising skills and attitudes to prepare you for work and later life. You will also be empowered to take responsibility towards achieving your goals.



CONTACT: *MRS CRAIG*

PHYSICAL EDUCATION - COMPULSORY

This is not a GCSE course. You will all be taught at least two out of the six areas of activity. You are encouraged to show that you participate in physical activity to support a fit and healthy lifestyle and you may be taught in both single sex and mixed groups.



PHYSICAL EDUCATION GCSE

The GCSE course is made up of the following areas:



Paper 1: The human body and movement in physical activity and sport

This is a written paper worth 30% of the total marks and lasting 1 hour 15 minutes. Questions are multiple choice/objective test questions, short answer and extended answers on the following topics:

- Applied anatomy and physiology
- Movement analysis
- Physical training
- Use of data



Paper 2: Socio-cultural influences and well-being in physical activity and sport

This is a second written paper worth 30% of the total marks and lasting 1 hour 15 minutes. Questions are multiple choice/objective test questions, short answer and extended answers on the following topics:

- Sports psychology
- Socio-cultural influences
- Health, fitness and well-being
- Use of data

Non-exam assessment: Practical performance in physical activity

This is a controlled assessment worth 40% of the total marks. In school you will complete at least four assessments as a performer across a range of sports and physical activities that are found in the National Curriculum. Practical performance will be assessed across three different physical activities in the role of player/performer (one in a team activity, one in an individual activity and a third in a team or individual activity). You will also be assessed in your ability to analyse and evaluate your performance in order to improve in one activity. You may be assessed in practical activities that you complete outside of school that are not delivered on-site. Where an assessed activity has been performed outside of school, an audio-visual recording is required. PE staff will provide guidance on this and a copy of the AQA assessment criteria. Example activities would include activities such as golf, canoeing and skiing.

Post 16 Progression This course provides an excellent foundation for pursuing a range of Post-16 courses such as A level Physical Education and allows for progression to related vocational qualification such as BTEC Nationals in Sport or Sport and Exercise Science. With further training, it can lead to a wide variety of employment opportunities in sports science, teaching, recreational management, coaching, officiating, the fitness industry and the armed forces.

CONTACT: *MR SCOTT*

RELIGIOUS STUDIES - COMPULSORY

You will follow the **GCSE Full Course - Ethics, Philosophy and Religion in Society**. This GCSE course commenced in Year 9 and lasts for three years.

The GCSE course is designed to allow you to make a thematic study of religion and religious responses to fundamental questions of life, with a particular focus on ethical and philosophical issues. Topics include:

Component 1

Christianity
Buddhism

Component 2

Religion and life
Religion, peace and conflict
Religion, crime and punishment
Relationships and families



There is one written paper for each component and each contributes 50% of the total marks.

Post 16 Progression Religious Studies is a valuable entry qualification to Post-16 education. This course develops your ability to listen, share and express views. It also develops your ability to acknowledge and respect others' opinions on a range of moral and ethical issues and questions of belief. Some go on to study Religious Studies, Ethics or Philosophy at A level.

CONTACT: *DR HENDERSON*

SCIENCE – COMPULSORY

You will all follow a Separate Science GCSE course.

SEPARATE SCIENCES

Most of you will sit the **AQA Separate Science GCSE's in Year 11** – in order to gain **three GCSEs in Science**: Biology, Chemistry and Physics. Everyone has started these GCSEs in Year 9, for entry to the 2018 GCSE exams.

SCIENCE – GCSE Combined Science: Trilogy

Some of you will sit the **AQA GCSE Combined Science: Trilogy**. This is a double award, so equivalent to two GCSEs in Science. It is taught as three separate sciences, but assessed and awarded as a combined science.

We will carefully track your progress using Key Assessment data from Years 9, 10 and 11. This data will be used to determine whether or not we feel that you will be able to cope with the demands of three separate science GCSEs. If this is not the case then you will follow the AQA GCSE Combined Science: Trilogy.

For both Science GCSE routes, topics covered will include areas of Biology, Chemistry and Physics – focusing on 'How Science Works'. These will be assessed by external assessments in Year 11. These papers contribute 100% of the final marks. There is also a 'required' practical element to the GCSE, where you will be assessed on your practical skills.



Post 16 Progression Both courses will give you a firm foundation for a wide range of further qualifications and careers. Some study A-levels in Biology, Chemistry or Physics and others study subjects such as engineering, health care and environmental science. Future careers include medicine, veterinary care and dentistry.

CONTACT: *MR OREN*

SPANISH

You will follow the **AQA Specification GCSE in Spanish**. This will build upon the language learnt in KS3.

This course is entirely assessed by final examinations. Listening, Speaking, Reading and Writing examinations will be taken at the end of year 11.

In the Spanish GCSE course, you will study three themes, divided into topics.

- **Identity and culture:**

- *Me, my family and my friends*
- *Technology in everyday life*
- *Free time activities*

- **Local, national, international and global areas of interest**

- *Home, town, neighbourhood and region*
- *Social issues*
- *Global issues*
- *Travel and tourism*

- **Current and future study and employment**

- *My studies*
- *Life at school/ college*
- *Education post-16*
- *Jobs, career choices and ambitions*



The final examination tests four skill areas:

- Paper 1: Listening (25% of the overall GCSE): written exam
 - Section A: questions in English, to be answered in English or non-verbally
 - Section B: questions in Spanish, to be answered in Spanish or non-verbally
- Paper 2: Speaking (25% of the overall GCSE): non-exam assessment
 - Role-play
 - Conversation around a photocard
 - General conversation

- Paper 3: Reading (25% of the overall GCSE): written exam
 - Section A: questions in English to be answered in English or non-verbally
 - Section B: questions in Spanish to be answered in Spanish or non-verbally
 - Section C: translation from Spanish into English
- Paper 4: Writing (25% of the overall GCSE)
 - Foundation Tier
 - Question 1: message (response to a photo)
 - Question 2: short passage (4 bullet points)
 - Question 3: translation from English into Spanish
 - Question 4: structured writing task
 - Higher Tier
 - Question 1: structured writing task
 - Question 2: open ended writing task
 - Question 3: translation from English into Spanish

Post 16 Progression Languages can be studied to A-level and to degree level. Careers include interpreting, translating or teaching. However, as many jobs now require people to speak more than one language, being able to do so will increase your employability. Some universities in the future *may* require the English Baccalaureate, which includes a grade 5 or above in MFL GCSE for entry.

CONTACT: *MONSIEUR LE GOFF*

VOCATIONAL LEARNING

One selected group of pupils will follow an alternative curriculum. If selected, you will attend a campus of Sunderland College and follow a curriculum which is more focused on the world of work and the Key Skills required by employers. You will, however, still have access to at least eight GCSE courses.

This route offers the opportunity to gain vocational qualifications that are designed to enable pupils to progress into Further and Higher Education or to pursue apprenticeship/employment opportunities. This option will encourage the development of communication, team working and problem solving skills whilst working towards industry recognised qualifications such as NVQ's or City & Guilds in their chosen vocational area.

In Year 10 pupils will work towards a City and Guilds 5546 Employability skills qualification. Within this course they will follow a series of vocational taster courses such as motor vehicle studies, a range of construction trades including plastering, brickwork and joinery, catering and hair & beauty. Entry level qualifications in these areas will be gained.

In year 11 pupils will then choose one vocational area of interest and spend the year working towards a full Level 1 or Level 2 Certificate.

How will vocational courses help me after leaving school?

Employers want you to be able to use your initiative; they need you to be able to recognise problems and come up with solutions. The vocational courses provide you with the chance to display all of your personal qualities and skills, rather than just academic achievements, to a potential employer. The awards are valued within Further and Higher Education, as well as being recognised by a wide range of employers.

CONTACT: *MR SHAW and MR MOORE*



CHOOSING YOUR OPTIONS

Please complete the boxes on the yellow form at the end of this booklet. It should be returned to your Form Tutor by Tutor Review Day on **Thursday 25th February**. **If you fail to return your option form by the final deadline you will have the choices made for you.**

Please note that we **cannot guarantee** that everyone will follow their first choice of option subjects; we must consider pupil suitability, class sizes, staff numbers and the availability of specialist rooms. You must also make your option subjects carefully as once the timetable has been set you will not be able to change your choices.

To complete the Options Form:

- First decide which of one the Options in **Block W** you wish to choose and **number** your choice. *Remember that you need to have attained a **grade 5 in Maths** on your February report to be eligible for Computer Science.* Those that have been invited to do vocational learning **must** choose this option in this block.
- Next decide which of the subject you wish to choose in **Block X** (4 hours per fortnight). Put a number 1 by your first choice and a number 2 by your second choice. **N.B. You must make a first and a second choice.**
- Then choose **2** subjects from the remaining block (**Block Y**), writing a number 1 next to your two top choices and a number 2 by your second choice in this block.

Put a star (*) next to your favourite second choice between Blocks X and Y.

YOU CAN ONLY PUT A NUMBER AGAINST A SUBJECT ONCE. ALL SECOND CHOICES MUST BE DIFFERENT FROM ALL FIRST CHOICES.

- Check you have chosen at least **one** of the following as a **first** choice:
Geography, History, Computer Science, French or Spanish.

Please note that all the information contained in this options booklet is current at the time of issue. However we reserve the right to make specification changes in the best interest of pupils or as a consequence of legislation.

SAMPLE OPTION FORM *to show you how to complete the boxes.*

Name	Billy Bloggs		Form	9AH
Block W – 4 hours.		Block X – 4 hours		
GCSE ICT	1	Business Studies		
GCSE Computer Science *	2	Food Preparation & Nutrition		
Vocational Learning (invitation only)		French *	1	
<p>* Pupils will need to attain a grade 5 or above in Maths by Tutor Review Day to be eligible for this course.</p> <p><i>Those opting for Vocational Learning will tick the Vocational Learning option.</i></p>		Graphic Products		
		Media Studies		
		Music	2	
		Spanish *		
		Textiles		
		* Pupils must have studied this MFL in Year 9		

Block Y – 5 hours – Choose 2 Options and a second choice			
Art		Spanish	
Business Studies		Media Studies	1
French		Physical Education GCSE	2*
Geography		Vocational Learning (invitation only)	
History	1		
<p>Please check all different subjects chosen in each block and that the favourite 2nd choice is starred (*) from Block X and Y. Check you have chosen at least one of the following as a first choice: <i>Geography, History, Computer Science, French or Spanish.</i></p>		<p>The ENGLISH BACCALAUREATE is a measure which will recognise and reward pupils achieving at least 5 good passes (Grade 5 or above) across a core of selected academic subjects, which MUST include English Language, Mathematics, two Sciences, one Humanities subject and one Modern Foreign Language.</p>	
Pupil Signature	Parent Signature	Tutor Signature	Date form submitted to tutor
.....

You can only put a number against a subject once. *Notice that all the second choices are also shown in these Option Blocks.*

OPTION FORM 2016 - FINAL COPY

Forms should be returned to your **Form Tutor** by **25th February 2016**

Name		Form	9
Block W - 4 hours.		Block X - 4 hours	
GCSE ICT		Business Studies	
GCSE Computer Science *		Food Preparation & Nutrition	
Vocational Learning (invitation only)		French *	
<p><i>* Pupils will need to attain a grade 5 or above in Maths by Tutor Review Day to be eligible for this course.</i></p> <p><i>Those opting for Vocational Learning will tick the Vocational Learning option.</i></p>		Graphic Products	
		Media Studies	
		Music	
		Spanish *	
		Textiles	
		* Pupils must have studied this MFL in Year 9	

Block Y - 5 hours - Choose 2 Options and a second choice			
Art		Spanish	
Business Studies		Media Studies	
French		Physical Education GCSE	
Geography		Vocational Learning (invitation only)	
History			
<p>Please check all different subjects chosen in each block and that the favourite 2nd choice is starred (*) from Block X and Y. Check you have chosen at least one of the following as a first choice: <i>Geography, History, Computer Science, French or Spanish.</i></p>		<p>The ENGLISH BACCALAUREATE is a measure which will recognise and reward pupils achieving at least 5 good passes (Grade 5 or above) across a core of selected academic subjects, which MUST include English Language, Mathematics, two Sciences, one Humanities subject and one Modern Foreign Language.</p>	
Pupil Signature	Parent Signature	Tutor Signature	Date form submitted to tutor
.....

Any combination of subjects you would like but cannot get above?