

Whitburn CofE Academy Sixth Form

Sixth Form Prospectus For 2021 Entry



Top-Bottom: memory walk for Alzheimers UK
2020; Team Swaziland 2019; Year 12 2019



'Excellence for All'



@whitburnsixthform



@WhitSixthForm

Welcome to Whitburn

Dear Prospective Student/Parent/Carer,

Hello, and welcome to Whitburn Church of England Academy Sixth Form! We work together as staff and students to benefit our school community and the wider community of Whitburn. Our role as Student Presidents is to work with the Junior Leadership Team, to be role models to the main school and give our peers a voice to be heard, for example, by encouraging the use of reusable plastics and introducing separate bins for recycling. We have an excellent and unique support network, characterised by the teachers' open-door policy, where both academic and general help and support is accessible to all students at any time. To further add to this, we also encourage the use of Teams, which allows students to communicate with teachers at any point in the day from home. Our Sixth Form offers a wide range of opportunities, from trips to Tanzania, Berlin, London, Iceland to courses in British Sign Language, Young Enterprise, and Mandarin. Here at Whitburn there is something on offer for everyone.

Patrick and Cameron, Student Presidents



Dear Student

We regard it as an honour that you consider placing your trust in us to deliver an outstanding post-16 educational experience, opening up exciting routes to further education and employment. I believe our Sixth Form offers a distinctive and more adult learning environment but retains the existing strengths of the school. Whitburn Church of England Academy now has a track record of excellent results at A level, with our graduates achieving places on prestigious courses at top universities and in degree level apprenticeships. Last year was our best ever set of results based upon progress and I am confident that this will continue to improve on a yearly basis. Few non-selective Sixth Forms can match our record in terms of results, progress and success in Oxbridge, Russell Group University and medicine applications.

Equally as important as academic success, we have long been recognised as a nurturing environment for personal and spiritual development, living up to our motto of "Excellence for all". We have an extensive extra-curricular and enrichment programme and outstanding provision in arts, music and sports so that our 'graduates' have every advantage that a well-rounded education can offer. We are proud of the warm, welcoming atmosphere that our Sixth Form offers where Whitburn students have the opportunity to continue their successful education with staff they know and trust, but where we very much welcome new entrants to our Sixth Form who integrate quickly and add to the life of the school. I look forward to welcoming you to our Sixth Form.

Mr J Crowe, Principal



Whilst this prospectus is designed to give you a flavour of life at Whitburn Sixth Form, we hope you have spoken to some of our current and former students about their experience studying here. We are delighted with the results of our exit survey completed by Year 13 students. We ask what they have enjoyed the most about their time in Sixth Form. The most common answers are 'the community feel', 'support, both academic and non-academic' and 'the teachers'. When we ask what could be improved, we get significantly fewer answers! Visitors to our Sixth Form, including inspectors and staff from other educational establishments have commented upon the calm, purposeful working atmosphere in our independent study spaces. This is a good measure of the attitude of our students and it ensures the foundations are there for all students to make good progress.

We are immensely proud of our destinations statistics, and we have much experience in supporting students to achieve top university places as well as Higher Apprenticeships, School Leaver Programmes and Degree Apprenticeships. We hope you agree that everything is in place here to help you achieve your ambitions and that you choose to join us in September 2021.

Mr L M Craggs, Head of Sixth Form



'Excellence for All'



@whitburnsixthform

@WhitSixthForm

Student Support at Whitburn

Support can take many forms. The Sixth Form team meet students regularly to discuss how things are going and to offer support with whatever need might arise during what can be a stressful two years. Sixth Form brings many new challenges personally as well as academically and we have a strong support network available to students.

Each student has a **personal tutor** as an initial point of contact. Head of Sixth Form, Mr Craggs and Assistant Head of Sixth Form, Ms Dickenson are always available for students. Sixth Form Administrator Miss Yule can help with day-to-day practical issues. We employ a dedicated **Careers Coordinator**, Mr Moore, who is based in Sixth Form and has extensive knowledge of the careers landscape. Our **Academic Mentor**, Miss Manning works with identified students to support with various aspects of learning and progress. As part of the wider Academy, Mrs Bengston is the **SENDCO** and coordinates support for those with identified needs.

Peer-to-peer support is available through our subject reps and revision buddying initiatives. Academic support is enhanced by our strong **links with local Universities**, in particular our nearest neighbour Sunderland University, with whom we have a **strategic partnership** agreement which has led to bespoke opportunities being offered to our students.

Financial Support is available through the 16-19 bursary, full details of which can be found on the website. Free School Meals continue to be available to those who are eligible - see the link on the main academy website.



Mr L Craggs
Head of Sixth Form,
Teacher of Biology,
DSL



Ms K Dickenson
Assistant Head of
Sixth Form, Teacher
of English



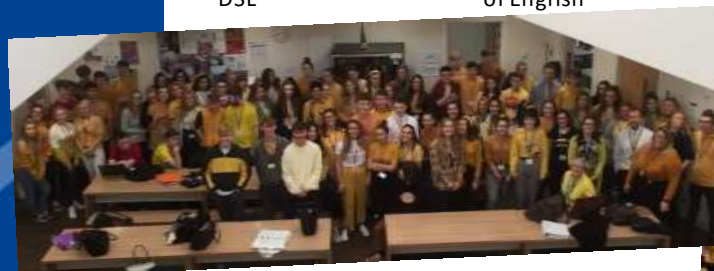
Mr A Moore
Careers Coordinator



Miss R Yule
Sixth Form
Administrator



Miss K Manning
Sixth Form Academic
Mentor



Wearing Yellow to support the charity Young Minds 2019, 2020



'Excellence for All'



@whitburnsixthform



@WhitSixthForm

Why Choose Whitburn?



**AMAZING AND INSPIRING EDUCATION
FROM PASSIONATE SUBJECT TEACHERS
SENSE OF COMMUNITY WITH FELLOW STUDENTS
RANGE OF EXTRA & SUPER CURRICULAR ACTIVITIES**



WE ARE TREATED LIKE ADULTS

THE SIXTH FORM IS WORLD CLASS FOR A REASON

Student Satisfaction
We are hugely proud of our feedback ratings in our annual student survey:
98% feel 'settled' at Whitburn Sixth Form.

Continuity
Year 11 students have the opportunity to benefit from two more years of 'the best of Whitburn' – teaching and support – whilst gaining more freedom and independence in Sixth Form.

Enrichment and Support
We have a full Enrichment programme offering opportunities for all students to benefit from new experiences and build a portfolio of skills for their personal statement.

Our Anglican Ethos
Our supportive, community feel flows from our Anglican ethos. It influences how we treat each other and how we integrate those joining from other schools.

Trips and Visits
From visits to local universities for all students, to a World Challenge expedition to Nepal which requires commitment to fundraising, there is something for everyone to enjoy and benefit from.

Dedicated, modern Sixth Form facility
We can offer beautiful study facilities with Sixth Form students enjoying their own canteen, high-spec classrooms and study spaces, and a fast wi-fi connection.

A Sixth Form in the 'Goldilocks Zone'
We often say we are large enough to have the range of courses and the connections to give you the best experience, but small enough to make you feel welcome, and that we know you personally.

THE SUPPORT AND ADVICE YOU WILL RECEIVE IS INCREDIBLE

COMMUNITY SPIRIT FRIENDLY ATMOSPHERE



UNIVERSITY ADVICE ENRICHMENT OPTIONS

THE ATMOSPHERE IN SIXTH FORM TEACHERS HAVE GIVEN ME GREAT NON ACADEMIC AND ACADEMIC SUPPORT TOO



'Excellence for All'



Life At Whitburn

As a student in our Sixth Form, you have considerably more freedom than pupils in the lower school. Whilst we have a relaxed environment which is less formal in many ways, we encourage professionalism in all areas. To help us achieve this, we have certain expectations of you that reflect that you are a young adult, that you are part of the Sixth Form and that you are part of the wider school community.

Dress Code

Students in the sixth form have the privilege of choice, provided that their dress is appropriate for a professional, working environment. A good guideline is that the student should *feel confident that they have dressed appropriately for an interview*.

Acceptable Dress

- Watch and jewellery appropriate to a business environment
- Subtle make up and nail varnish appropriate to a business environment
- Tailored jacket or formal suit or jumper or cardigan
- Plain coloured shirt or smart top
- Smart trousers or skirt of a modest length (5cm maximum above knee)
- Dress of a modest length
- Tie of own choice (optional)
- Smart shoes (heel 2cm maximum height)
- One nose stud (not a ring)
- Lanyard with Student ID badge

Unacceptable Dress

- Denim
- Sportswear or other casual wear (unless attending practical PE lessons)
- Extreme hair styles and colours
- Visible tattoos



As Head of Sixth Form, Mr Craggs will have the final say as to whether students are dressed in what is deemed to be appropriate under the Dress Code.

Safeguarding

It is a requirement that every person on site is immediately identifiable as a member of the school so Sixth Form students must wear an ID badge at all times. Badges and lanyards are supplied free of charge to students but any losses will incur a replacement cost. The badge also incorporates a chip which operates the door system in the Sixth Form block and allows students to access the main school building.



'Excellence for All'



@whitburnsixthform

@WhitSixthForm

Life At Whitburn

School Day

The school day for Sixth Form students will follow the same structure as the lower school, running from 8.55am until 3.30pm. Many students choose to work café-style and take the later 4.30 bus. The building remains open for students until 5.00pm.

Attendance

Alongside hard work, dedication and excellent teaching, full attendance is the most significant determining factor in achieving success at A Level. Students are expected to be in school all day every day, and a significant number of students choose to work for an extra hour and get the late bus home.

Independent Work

Once a student moves into Sixth Form, the phrase “..well I’ve finished all of my homework” is banned! Sixth Form is very much about self-regulated learning and whilst independent study will include formal, set homework tasks, it is also about reviewing lesson notes, making revision resources, reading around the subject, collaborating with peers to check understanding, watching lectures and talks from online resources such as TED Talks, YouTube and Kahn Academy.

It is expected that in addition to 5 hours per subject per week of timetabled lessons, students will spend up to **5 hours per week, per subject** in self-regulated learning. Course staff will guide students in this, especially during the early weeks of Year 12, and will be on hand to support students who find difficulty adapting. We encourage students to consider this their full-time job and therefore aim for 30-40 hours of work per week.

Pastoral System

There will be up to six form classes in each year group. The form tutor will also deliver the fortnightly PSHE lesson. This programme will incorporate a range of activities including taught elements of the Extended Project Qualification, covering study skills, careers and HE advice, sessions on independent living and other activities in support of our Anglican ethos. This programme will be supplemented by occasional collapsed timetable days.

Car Parking

Any Sixth Form student who wishes to bring a car to school must park responsibly with due regard for our neighbours. There is no space for student car parking on site. We would encourage students to purchase council permits for the Whitburn Bents (‘Latimer’s’) Car Park. This permit will last all year and can be used outside of school time too, therefore representing very good value.



HE Fayre in full swing here this afternoon with our students asking good questions about their futures



22/06/2018, 14:08



‘Excellence for All’



@whitburnsixthform

@WhitSixthForm

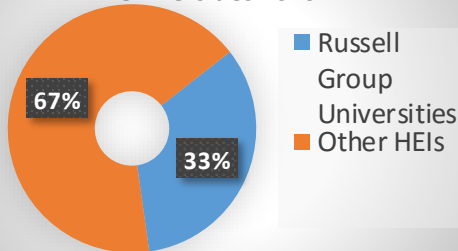
We are proud of our outcomes

No longer a 'new' Sixth Form, Whitburn Church of England Academy Sixth Form has a proud track record of A level success. Outcomes are good for all students and we are especially proud of our positive progress measure. This means that students, on average, outperform their expectations (based upon GCSE grades) by 0.12 grades per entry. This excellent progress is achieved with an inclusive cohort, by establishing a purposeful working atmosphere and by ensuring students are well-taught and have good support around them.

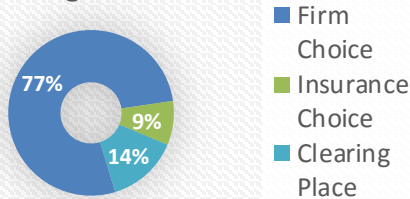
All of this has enabled our students to take the next steps in their careers, either by successfully gaining a University place, a Higher Apprenticeship, or a School Leaver Programme.

	A*	A*-A	A*-B	A*-C	A*-D	A*-E	Progress Measure*
2017	6.4%	27.6%	47.2%	68.8%	82.4%	95.2%	n/a
2018	5.8%	24.1%	51.4%	76.2%	90.7%	96.5%	n/a
2019	5.4%	21.5%	52.2%	74.2%	92.7%	99.0%	+0.3
2020	8.2%	28.7%	56.3%	80.1%	94.5%	100%	+0.35

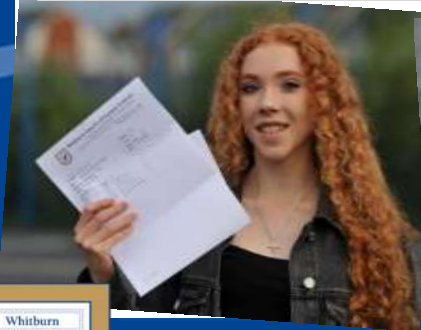
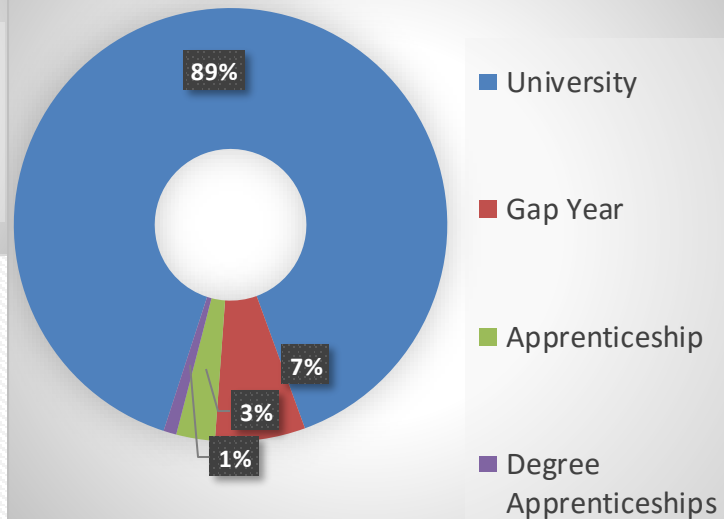
Students Placed at Russell Group Universities 2020



Place gained was students'...



Destinations 2020



'Excellence for All'



@whitburnsixthform

@WhitSixthForm

Trips and Visits

Our first World Challengers have had transformative experiences in Malawi in 2018 and Swaziland 2019. Students returned with a new perspective on life. They felt they had been able to help a community and also enjoyed a Safari. We have teams lined up for Tanzania 2021 and Nepal 2022.

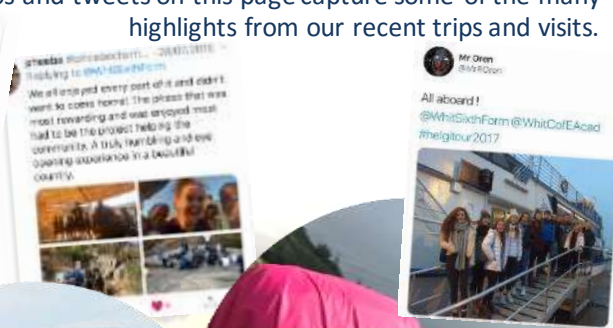
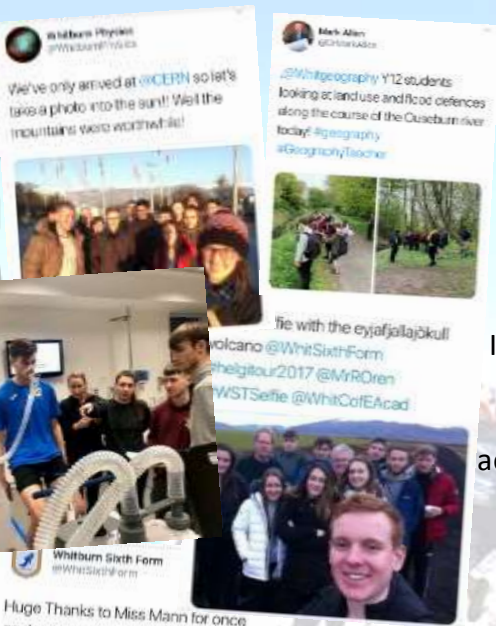
We run bi-annual Iceland and Berlin trips. The visit to Iceland allowed students to see geological marvels such as geysers, crater lakes, glaciers, volcanoes and black sands and the Secret Lagoon as well as human achievements such as geothermally-heated greenhouses producing tomatoes near the Arctic Circle. A whale-watching trip satisfied the biologists.

Our Berlin trip gave our Historians a chance to visit the Berlin Wall and Holocaust memorial sites. Two students annually are selected to visit Auschwitz.

Duke of Edinburgh groups are going for Gold once again. Biology and Geography fieldtrips are an integral part of the course. All students have the opportunity to visit Sunderland and Northumbria Universities.

Several subjects use our partnership with Sunderland University to visit their facilities to enhance learning.

Photos and tweets on this page capture some of the many highlights from our recent trips and visits.



'Excellence for All'



@whitburnsixthform

@WhitSixthForm

A Connected Sixth Form

They say 'no man is an island' and we are proud of our efforts in making links with other organisations who have something to offer our students. Our flagship formal partnership with Sunderland University allows students to visit the university and make use of state-of-the-art facilities that usually are not available to Sixth Form students. We have also hosted academics at the Academy to share their experience with our students.

We are involved with the local universities and we host speakers to talk about their Supported Progression schemes—NU Entry, Durham SP, Sunderland First Choice and Newcastle Partners. All of our Year 12 students spend a day at both Northumbria and Sunderland Universities developing study skills and exploring opportunities beyond Sixth Form.

Our brightest prospects attended the Oxford and Cambridge Student Conferences and we are part of the Cambridge HE+ group to encourage and support entry to competitive universities.

We are a careers Hub School and for those not set on the traditional University route, we have been involved with several firms offering fabulous sponsored degree or degree apprenticeship programmes—Orchard Software, Accenture, Ernst and Young, RSM, KPMG, Northumbrian Water amongst others. Over 30 providers attended our HE and School Leavers' Fayre showcasing degrees, alternatives to University and Gap Years.

Our Enrichment programme is supported by a local tutor who delivers our popular Sign Language course. NCS visit regularly to offer their programme to our students. World Challenge are our chosen partner for our overseas expeditions to Tanzania in 2021 and Nepal in 2022. Our link with Simonside Outdoor Adventure allows Whitburn students to go straight on to their Gold DofE Award.



Whitburn Sixth Form @WhitSixthForm

Welcome back to one of our 'old boys' the always immaculate Lewis who is advocating school leaver programmes & higher apprenticeships with @RSMTenon @WhitCofEAcad



Whitburn Sixth Form @WhitSixthForm

Road Sense Commin Sense with @OpDragon @northumbriapol this morning. Important messages for all. Inspirational speakers. @WhitCofEAcad



Whitburn Sixth Form @WhitSixthForm

Results are in... our future doctors, pharmacists, biomedical scientists and pharmacologists will do their bit to fight @AntibioticResistance @Whitbiology @WhitCofEAcad @Sunderland.ac.uk



Rebecca Williams @R

HE+ residential 🤔 #whitburnatcambridge



29/03/2018, 12:14

1 Retweet 3 Likes



'Excellence for All'



@whitburnsixthform

@WhitSixthForm

Not just a pathway to university...

It would be a mistake to think that you only study A Levels to get into University!

Studying A Levels makes you attractive to employers who can offer:

- Higher Apprenticeships
- School Leaver Programmes
- Degree Apprenticeships

Employers tell us that students with A Levels are keen to learn and in some cases they are preferred to graduates. Some of our students have gained positions with the companies shown below. Some have returned to us to share their experiences with current students.

Lewis (class of 2017)
Accounts & Business
Advisory Asst



Imogen (class of 2019)
Accounts & Business
Advisory Asst



Summer (class of 2020)
Surveying Degree
Apprenticeship



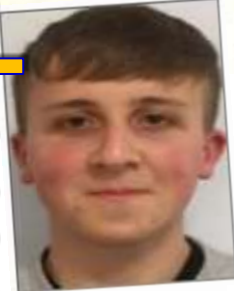
Matthew (class of 2018)
ICT Network
Development Apprentice



Rachel (class of 2018)
Healthcare Assistant
Apprentice



Joe (class of 2019)
PlanBee Apprenticeship



Samantha (class of 2018)
Administration Apprentice



Sharlize (class of 2020)
Apprentice
Videographer



Ben (class of 2018)
Digital Marketing Apprentice



Emma (class of 2019)
Travel Consultancy
Apprentice



And how fantastic to see some of our former students telling their success stories - Dom, Samantha and Lewis



17.04 - 21/06/2018 - Twitter for iPhone



'Excellence for All'



@whitburnsixthform

@WhitSixthForm

Choosing A Levels

Choosing your A level courses may be straightforward for some but can be a huge dilemma for others, especially if you are unsure about what you want to do after Sixth Form. It is important to make an informed decision, as your choice of courses will have a major bearing on your university and career choices in the future.

All students must pick three courses. A fourth academic qualification is possible in the form of the Further Maths, EPQ or Core Maths alongside your three A Levels.

Time allocation

Teaching time for each subject will be **5 hours per week**. The remaining periods will be allocated as self-directed study periods and there is a clear expectation that students make sensible decisions about how they spend this time.

How to make your choices

If you have a clear idea about the university course you would like to apply to or have a particular career in mind, then your choices are likely to be straightforward. For example, for Medicine, Chemistry is considered essential. It is well worth checking the requirements for particular courses and careers before selecting your A levels. Mr Moore (Careers Coordinator), Mr Craggs (Head of Sixth Form) and Ms Dickenson (Assistant Head of Sixth Form) are all available to support students in making these decisions.

Guidance Meetings

As part of the application process, you will be invited in for a guidance meeting with one of the Sixth Form team. These typically take place in February, once offer letters have been sent out. The meeting will last around 15 minutes and is a valuable opportunity to get some advice and guidance about subject choices and how they will set you up for your next steps after Sixth Form.

Keeping your options open

It is best to choose subjects that you are interested in and perhaps those for which you are predicted the highest GCSE grades as you will be more likely to be successful doing what you enjoy and are 'good at'.

If you're unsure which courses to choose in Sixth Form try these websites for advice. Look carefully over the 'do's' and 'don'ts'.
If you don't know what career path to follow or what course you might do at university, or even if university is for you, a range to meet Mr Moore or Mr Craggs.

INFORMED CHOICES WEBSITE

The Russell Group of Universities have developed an excellent website which allows you to select A Levels before showing you what you can do with this combination.

We strongly recommend you do this before applying.



[UCAS](https://www.ucas.com)



[Unifrog](https://www.unifrog.com)



[Russell Group](https://www.russellgroup.org)



[Prospects.ac.uk](https://www.prospects.ac.uk)



[Studential.com](https://www.studential.com)



'Excellence for All'



@whitburnsixthform



@WhitSixthForm

Entrance Requirements

We expect **applicants for A Level programmes** to present at enrolment with a good range of GCSEs averaging grade 5 or above including English and Maths. This will give you a good chance of success at A Level. We would expect students to achieve a D or higher by the end of Year 12 to make continuation in that subject a sensible option. If a subject is oversubscribed, priority will be given to those who meet the entry criteria, in the order in which they applied. Requests to change subject choices will be dated for this purpose.

Subjects must have a minimum number of students to be viable.

Subject	Qualification	Contact	Entry Requirements
Art – Fine Art	A Level	Mrs Dembry	Grade 5 in GCSE Art and Design. If Art has not been studied at GCSE, you will be required to show a portfolio of your work to be considered for a place on this course.
Biology	A Level	Mrs Pollard	Grade 5 in GCSE Mathematics and either a Grade 6 in GCSE Biology or 6-6 in Dual Award Science.
Business Studies	A Level	Ms Thirwell	Grade 5 in GCSE Business Studies. If Business has not been studied at GCSE, a Grade 5 in both GCSE English Language and Maths.
Chemistry	A Level	Dr Holder	Grade 6 in GCSE Mathematics and either Grade 6 in GCSE Chemistry or 6-6 in Dual Award Science.
Computer Science	A Level	Mr Mulford	Grade 5 in GCSE Computing Science. If Computer Science has not been studied at GCSE, a Grade 5 in Mathematics.
Core Maths	Level 3 Cert.	Mrs Bentley	Grade 4 in GCSE Maths, preferably Grade 5.
Economics	A Level	Mr Shaw	Grade 5 in GCSE Mathematics and Grade 5 in GCSE English Language.
English Language	A Level	Mrs Maughan	Grade 5 in GCSE English Language.
English Literature	A Level	Ms McLean	Grade 6 in GCSE English Literature and at least Grade 5 in English Language.
French	A Level	Mrs Watson	Grade 6 in GCSE French.
Further Maths	A Level	Mr Sheard	This course must be taken alongside A Level Mathematics. Students must have a Grade 7 in GCSE Mathematics.
Geography	A Level	Mrs Husband	Grade 5 in GCSE Mathematics and Grade 5 in GCSE Geography. If Geography has not been studied at GCSE, a Grade 5 in English Language and Grade 5 in a Science
Health & Social Care	Level 3 BTEC	Ms Charles	Grade 4 in English Language, Maths, and Biology or Trilogy Science.
History	A Level	Mr Liddle	Grade 5 in GCSE History. If History has not been studied at GCSE, a Grade 5 in English Language.
Maths	A Level	Mrs Bartch	Grade 6 in GCSE Mathematics.
Media Studies	A Level	Mr Smailes	Grade 5 in GCSE Media Studies or Pass in BTEC Creative Media. If Media Studies has not been studied at GCSE, a Grade 5 in English Language or English Literature.
Music	A Level	Miss Cresswell	Grade 6 in GCSE Music. If Music has not been studied at GCSE, ABRSM (or equivalent) Grade 5.
Philosophy & Ethics	A Level	Ms Roberts	Grade 5 in GCSE RE. If RE has not been studied at GCSE, a Grade 5 in English Language GCSE.
Physical Education	A Level	Mr Leggett	Grade 5 in GCSE PE. If PE has not been studied at GCSE, a Grade 5 in Biology or Trilogy Science. You must also be very good at practical PE regularly participating at a competitive standard.
Physics	A Level	Miss Kiefer	Grade 6 in GCSE Mathematics and either a Grade 6 in GCSE Physics or 6-6 in Dual Award Science.
Politics	A Level	Mrs Fortune	Grade 5 in GCSE English Language or Literature.
Psychology	A Level	Miss Boswell	Grade 5 in GCSE English Language or Literature and Grade 5 in Biology or 5-5 in Trilogy Science.
Sociology	A Level	Miss Boswell	Grade 5 in English Language or Literature.
Spanish	A Level	Mrs Watson	Grade 6 in GCSE Spanish.
Theatre Studies	A Level	Ms Wilson	Grade 5 in English Language or Literature. GCSE in Drama useful but not essential.



'Excellence for All'



@whitburnsixthform

@WhitSixthForm

Option Blocks 2020-21

Sixth Form Provisional Option Blocks 2021-2022

These blocks are based on our current Year 13 model. Please try to choose your three subjects from different blocks, such that there is no 'clash'. You are also asked to make a 'reserve' choice from the fourth block in case a subject is not viable. In this event, we would contact you as soon as we know for certain this is the case.

We are sometimes able to move subjects if necessary to make combinations work, *if there is sufficient demand to do so*. Please speak to Mr Craggs or Mr Moore if there is a particular combination you would like to do that does not fit into the current blocking system.

As with any Sixth Form, please note student numbers need to reach a minimum level for the course to run.

Block A	Block B	Block C	Block D
Biology	Business Studies	Core Maths	Art
Economics	Computing	English Language	Biology
Maths	Chemistry	French or Spanish~	Business Studies
Politics	English Literature	Further Maths#	Core Maths
Psychology	Geography	History	Geography
Sociology	Maths	Physics	Health and Social Care
Theatre Studies	Media Studies	Sociology	Music
	Physical Education (PE)		Philosophy & Ethics (RE)
	Psychology		Physics
EPQ	EPQ	EPQ	EPQ

~ We anticipate only one language will run due to numbers of applicants. We will confirm which one as soon as possible.

Further Maths must be chosen with Maths (in either block A or B)

Application timeline and key dates:

Attend Virtual
Open Evening
**12th November
2020**

Taster Day
January 2021
TBC

Application
Deadline
**12 noon
24th January
2020**

Guidance
Meetings
**February-
March 2021**
(maybe via
Teams/eqquiv.)

**Formal
Enrolment
August 2021**



On the following pages you will find our Subject Descriptors.

You will be able to discuss subject choices at a Guidance Meeting after the Application Deadline.

Careers information in subject descriptors taken from www.prospects.ac.uk



'Excellence for All'



@whitburnsixthform

@WhitSixthForm

A Level Art and Design

Exam board: AQA

Why choose Art and Design?

Did you enjoy the challenges of GCSE? Then you will certainly enjoy A level Art and Design. It gives you the opportunity to further develop your style, ideas and skills. It provides the foundation for further study of Art and Design or related subjects in Higher Education leading to Foundation Degree, Higher National Diplomas and Degree.

A wide range of courses including BTECs, apprenticeships and university entry can be accessed leading to careers in advertising and marketing to art therapy, fashion design and concept art.

...So what are you waiting for? We're looking for the next great artist. Is it you?

Job options

Jobs directly related to a Fine Art degree include:

Designer (exhibition, hat, shoe, product, computer games, theatre/movie sets, fashion, landscape, garden etc.)

Photographer (product, studio, advertising)

Fine artist

Teacher or lecturer

Illustrator or animator

Museum/gallery curator

Movie story boarder

Jobs where your Fine Art degree would be useful include:

Event management

Arts administrator

Commercial art gallery manager

Interior and spatial designer

Museum/gallery exhibitions officer

Multimedia programmer

How the Course is Examined

60% personal study/art project (1,000 – 3,000 word essay) and February – April 40% exam.

"My favourite subject is Art – I love it because I can experiment with different materials, create beautiful things and express myself".



2020 Student Profile: Nikola

Other subjects: Business & Media

Now studying: Graphic Design

Northumbria University



Course Detail

Year 12: Skill development for the first term then decide on your topic and start your project! Creatively develop personal responses to ideas, observations, experiences, environments and cultures in practical, critical and contextual forms. In other words you will build upon skills learnt at GCSE and develop a greater understanding of the formal elements of art and art history. You'll create a 'full project' and be encouraged to work on a large scale.

Year 13: designed to stretch and challenge you further you'll use a broad range of materials and techniques. You will produce a 'full project', chosen by you and write a 1000-3000 word accompanying essay.

There will also be opportunities to visit art galleries, attend workshops with artists and gain careers advice from local higher education providers.



@WhitburnArt



A Level Biology



@BiologyWhitburn



Exam board: AQA

Why choose Biology?

The human genome has been sequenced and we know the complete arrangement of the three thousand million bases that make up human DNA.

In Kenya 350 people die every day from AIDS and in South East Asia the skies are dark with smoke as the last Bornean rainforests are burned to grow oil palms. Biologists are concerned with all these issues. The work they do in the fields of cell biology, medicine, food production and ecology is vital to us all and is never far from the headlines.

Having an A level in Biology will put you in great stead for a huge range of careers from Medicine to Environmental Science. You could progress to an Honours Degree, Foundation Degree or Higher National Diploma in Biological Science. Degree courses you may like to consider are Biology, Medicine, Veterinary Medicine, Dentistry, Zoology, Botany and Marine Biology.

Course Detail

Whilst studying this subject you will learn about disease, ecosystems and the variety of living organisms.

The course covers fundamental biological principles such as human health, animal and plant systems.

There will be an opportunity for fieldwork outside of school: we have been to Sunderland University, the Centre for Life and an anatomy workshop at the RVI.

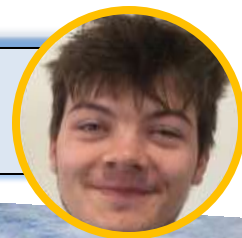
How the Course is Examined

This course will be assessed as an A Level at the end of Year 13 with three written exams, including an essay question.

2020 Student Profile: Frankie

Other subjects: Maths, PE

Now studying: Human Biology, Loughborough



Job options

Jobs directly related to a Biology degree include:

- Biotechnologist
- Higher education lecturer
- Microbiologist
- Nanotechnologist
- Nature conservation officer
- Pharmacologist
- Physician associate
- Research scientist (life sciences)
- Research scientist (medical)
- Secondary school teacher
- Soil scientist
- Zoologist



Jobs where your Biology degree would be useful include:

- General practice doctor
- Sustainability consultant
- Health promotion specialist
- Science writer
- Acupuncturist
- Dentist



A Level Business Studies

Exam board: Edexcel

Why choose Business Studies?

Business is front page news. The subject allows students to explore business behaviour and understand how a business operates and what can influence its success. It gives pupils the opportunity to understand how the world they live in works, as well as developing entrepreneurial skills, problem-solving abilities and strategic thinking. It combines well with all other subjects due to its relevance to so many careers and everyday life.

If you have Business Studies A level it can be attractive to employers as it shows you have a background knowledge of how a business works, so you can then be considered for higher positions.

Career choices with A-level Business include management, marketing, finance, accounting, banking, retailing, manufacturing and local government. Many universities accept Business A level when students are applying for courses such as Economics, Business Studies and many other options.



How the Course is Examined

This course will be assessed by three written papers, one of which will involve a pre-released case study.



Course Detail

You will cover 4 themes:

- Marketing and People
- Managing Business Activities
- Business Decisions and Strategies
- Global business

You will have the opportunity to study up to date case studies to allow them to see how the theory links to the real world. You will investigate how a business makes decisions, along with how these decisions impact a business.

Job options

Jobs directly related to a Business degree include:

Actuarial analyst
Business adviser
Business analyst
Chartered management accountant
Corporate investment banker
Data analyst
Data scientist
Forensic accountant
Insurance underwriter
Management consultant
Operational researcher
Product manager
Project manager
Risk manager
Social media manager
Stockbroker
Sustainability consultant

Jobs where your Business degree would be useful include:

Human resources officer
Logistics and distribution manager
Marketing executive
Retail manager
Sales executive
Stylist
Systems analyst
UX analyst



@WhitburnBusine1



2020 Student Profile: Macy
Other subjects: Economics, Maths
Now: Business & Economics, Edge Hill



* Photos are of our Young Enterprise teams

A Level Chemistry



@ChemWhitburn



Exam board: AQA

Why choose Chemistry?

Chemistry A level opens doors to all sorts of careers that you may not have imagined! The food we eat, clothes we wear and the technology we use all depend upon chemistry. Chemists develop new medicines, safeguard our food supply and monitor and protect our environment. You will often spend time conducting experiments and research in a laboratory environment, so be prepared to work with a range of scientific equipment wearing your lab coat!

Having an A level in Chemistry will allow you to enter a range of careers including Medicine and Pharmacy, Forensic Science, Optometry and Physiology. If you want to go into a career in any form of medicine including Veterinary Science then you will find A level Chemistry compulsory or at least desirable. Other career possibilities include food technology, nursing, physiotherapy, radiography, law and zoology.

Job options

Jobs directly related to a Chemistry degree include:

*Analytical chemist
Chemical engineer
Healthcare scientist, clinical biochemistry
Forensic scientist
Nanotechnologist
Pharmacologist
Research scientist (physical sciences)
Toxicologist*

Jobs where your Chemistry degree would be useful include:

*Chartered certified accountant
Environmental consultant
Higher education lecturer
Nuclear engineer
Patent attorney
Science writer
Secondary school teacher*

2020 Student Profile: Henry

Other subjects: Biology, Maths

Now studying: Chemistry, Durham



Course Detail

A lot of the areas covered in A level Chemistry are studied at GCSE, such as the structure of an atom, bonding, quantitative chemistry, alkanes and the periodic table. However there are several new topics you will encounter whilst on the course such as energetics, kinetics and equilibrium, periodicity and organic analysis.

In addition to this you will focus on your practical skills as there will be an emphasis on linking theoretical knowledge to experimental work.

There will be opportunities for fieldwork outside of school, along with possible residential visits.

Our students have used first-class facilities at Sunderland University to carry out some of their required practical work as well as carrying out some of the tasks a pharmacist would do, such as preparing and dispensing a cream.



How the Course is Examined

This course will be assessed as an A Level at the end of Year 13.

A Level Computer Science



@WhitSixthForm

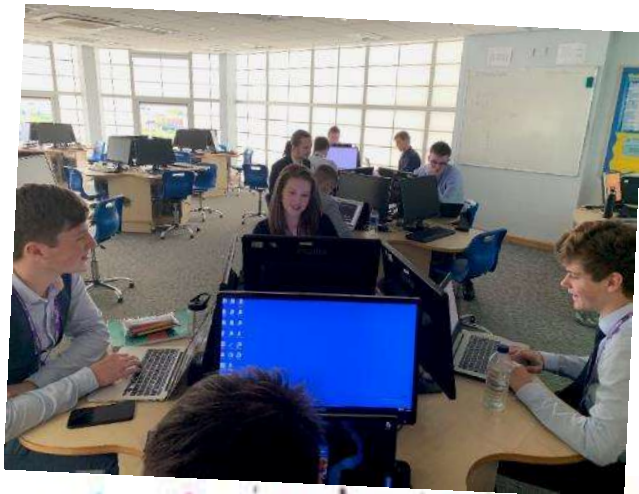


Exam board: AQA

Why choose Computer Science?

Computer Science is a practical subject where learners can apply the principles learned in the classroom to real world systems; it is an intensely creative subject that combines invention and excitement. Computer Science will value computational thinking, helping learners to develop the skills to solve problems, design systems and understand the power and limits of human and machine intelligence.

Students will develop an understanding of and ability to apply the concepts of computer science. They will learn to analyse problems and think creatively, innovatively and analytically. They will also develop the capacity to see relationships between the different aspects of Computer Science and develop mathematical skills. Studying this subject at A Level supports progress onto Computer Science and Software Engineering courses at University and employment opportunities in a growth industry.



Job options

Jobs directly related to a Computer Science degree include:

*Application analyst
Business analyst
Data analyst
Database administrator
Games developer
Information systems manager
IT consultant
Multimedia programmer
SEO specialist
Systems analyst
Systems developer
UX analyst
Web designer
Web developer*

Jobs where your Computer science degree would be useful include:

*Digital copywriter
IT sales professional
IT trainer
Nanotechnologist
Network engineer
PPC specialist
Product manager
Secondary school teacher
Social media manager
Technical author
UX designer
Web content manager*

Course Detail

The course comprises 3 components: **Computer Systems** which explores the characteristics of contemporary processors, how software is developed, the exchange of data between systems, data types, structures and algorithms and legal, moral and ethical issues.

Algorithms and Programming focused on computational thinking, problem solving and programming.

A **Programming Project** focused on designing, implementing and evaluating a program to solve a problem.

How the Course is Examined

The course is examined by two papers worth 40% each. The first is a written exam and the second is an on-screen programming task.

A **Non-Examination Assessment** is worth 20% of the final mark.

2020 Student Profile: Nick

Other subjects: Business, Maths

Now studying: Cybersecurity, Sunderland



A Level Economics

Exam board: AQA

Why choose Economics?

Economics is all around us; from how governments set policy to how we spend in the high street.

You will study:

Microeconomics which examines the behaviour of basic elements in the economy e.g. households, firms, buyers and sellers.

Macroeconomics which analyses the entire economy and issues affecting it including inflation, economic growth, and the public policies that address these issues.

An A level in Economics will provide you with a wide range of both subject-specific and transferable skills, all of which are highly sought after by employers and universities. Indeed, according to research by the University of Manchester, students who go on to study Economics at degree level have one of the highest employability records of all subjects!

How the Course is Examined

The assessment will be through three written examinations, equally weighted, covering the three component units.

Course Detail

This course covers 3 components of study over the two years;
Component 1 - Microeconomics covers topics including How a Competitive Market Works, Competition and Power, and Labour Markets.

Component 2 – Macroeconomics covers topics including Economic policy objectives and indicators of macro-economic performance and the global context.

Component 3 – Economic principles and issues; this will draw on the content of components 1 and 2 in a real world context.

2020 Student Profile: Summer

Other subjects: Business, Language

**Now: Degree Apprenticeship –
Surveying, Costain Group**



Job options

Jobs directly related to a Economics degree include:

*Actuarial analyst
Chartered accountant
Chartered certified accountant
Chartered public finance accountant
Data analyst
Economist
Financial risk analyst
Forensic accountant
Investment analyst
Statistician
Stockbroker*

Jobs where your Economics degree would be useful include:

*Actuary
Civil Service fast streamer
Data scientist
Diplomatic service officer
Local government officer
Management consultant
Quantity surveyor*



@WhitSixthForm



A Level English Language

Exam board: AQA

Why choose English Language?

English Language at A Level is completely different from GCSE and the aim of this course is to introduce you to methods of studying and understanding spoken and written language in use.

You will be exposed to some of the current debates about language use and encouraged to form and discuss your own opinions. The course will develop your analytical thinking and research abilities, which in turn will help to develop necessary skills required for a wide range of university degrees and possible careers.

Job options

Jobs directly related to a Linguistics degree include:

English as a foreign language teacher
Lexicographer
Publishing copy-editor/proof-reader
Speech and language therapist
Teaching assistant

Jobs where your Linguistics degree would be useful include:

Civil Service fast streamer
Digital copywriter
Editorial assistant
Information officer
Marketing executive
Primary school teacher
Public librarian
Public relations officer
Social researcher
Translator

How the Course is Examined

There are two written examinations which account for 80% of the A level. There is one coursework module which counts for 20%.

Course Detail

Throughout the first year, you will explore language in relation to the individual, looking at how language is used by different social groups and how language varies within different situations. You will also develop knowledge of phonetics and an advanced knowledge and awareness of grammar.

In Year 13, you will continue to develop this knowledge, adding new topics such as child language acquisition and how language has changed from the 1600s to the present day.

2020 Student Profile: Ollie

Other subjects: Business, History

Now studying: Law, York



English students meet inspirational linguist David Crystal



@Whitburnlang



A Level English Literature

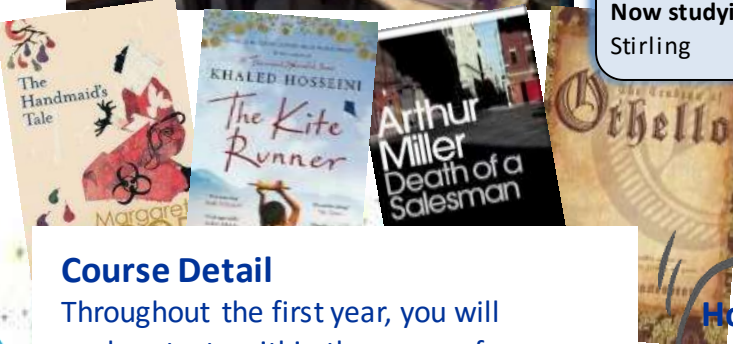
Exam board: AQA

Why choose English Literature?

Studying English Literature at A Level encourages an enjoyment and appreciation of Literature.

Key to success in English Literature is your ability and willingness to read independently. In preparation for the start of each year, there will be preparatory reading of exam texts to do over the summer holiday. Over the course you will also be expected to read critical material on the writers you are studying so as to develop your own interpretations of texts through understanding the views of others.

It is a facilitating subject, widely accepted and valued by universities across the country. A Level English Literature helps to develop skills of analysis and critical thinking, as well as individual study, thereby preparing you for a wide range of future career choices.



Course Detail

Throughout the first year, you will explore texts within the genre of Tragedy. You will study three texts including a Shakespeare text as well as a further drama text and a prose and poetry text.

There is a great deal of reading required for this course, and students will be expected to read independently from a wide selection of texts, including work by writers such as William Shakespeare and Margaret Atwood.

Job options

Jobs directly related to a English degree include:

Digital copywriter
Editorial assistant
English as a foreign language teacher
Lexicographer
Magazine journalist
Newspaper journalist
Publishing copy-editor/proof-reader
Web content manager
Writer

Jobs where your English degree would be useful include:

Academic librarian
Advertising account executive
Advertising copywriter
Arts administrator
Information officer
Marketing executive
PPC specialist
Primary school teacher
Public relations officer
Records manager
Secondary school teacher
Social media manager

2020 Student Profile: Maia

Other subjects: Philosophy, Politics

Now studying: English Studies, Stirling



How the Course is Examined

Unit 1, Tragedy, is studied in Year 1 and this is a closed book exam. Unit 2, Political Writing, is studied in Year 2 and this is an open book exam (80%)

There is a coursework module on literary theory which involves two essays looking at both the novel and poetry (20%)



@Whitburnlit



A Level French



@WhitSixthForm



Exam board: AQA

Why choose French?

Speaking a modern foreign language is an invaluable tool in today's modern world, "the global village". Recognised as a robust academic qualification, A Level French is highly valued by universities. It can lead to a French degree, or can also be studied in combination with another language, English Literature or International Business Management.

Over 200 million people throughout the world speak French. It is the international language of cooking, fashion, theatre, the visual arts, dance and architecture. Furthermore France is the most popular tourist country worldwide, attracting over 70 million visitors per year. A Level French allows students to build on the foundation of GCSE in order to gain independence in skills and to prepare for the study of the language at a higher level.

Course Detail

4 themes taught across 2 years. Taught through the means of listening, speaking, reading and writing, as follows:

Theme 1

Aspects of French-speaking society: current trends

Theme 2

Artistic culture in the French-speaking world

Theme 3

Aspects of French-speaking society: current issues

Theme 4

Aspects of political life in the French speaking world

Students also study 1 literary text (e.g. No et Moi), 1 film (e.g. Au Revoir les Enfants) and French grammar

2020 Student Profile: Libby

Other subjects: Biology, Chemistry

Now Studying: Pharmacy, Manchester



Job options

Jobs directly related to a Modern Languages degree include:

Interpreter

Translator

Marketing executive

Secondary school teacher

Jobs where your Modern Languages degree would be useful include:

Detective

Tour manager

Sales executive

Patent examiner

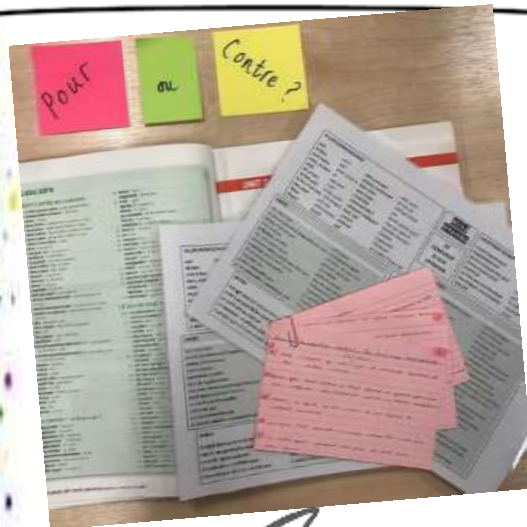
Broadcast journalist

Diplomatic service officer

English as a foreign language teacher

International aid/development worker

Logistics and distribution manager



How the Course is Examined 3 papers

Paper 1 : Listening, reading and writing (including translation)

Paper 2 : Writing (essay based on the text or film studied)

Paper 3 : Speaking (based on 4 subthemes)

A Level Geography



@whitgeography



Exam board: EDEXCEL

Why choose Geography?

Geographers study the interaction between people and the places they inhabit, exploring the relationship between human populations and physical landscape. As such it is a relevant and flexible subject which integrates well with a variety of other subject areas and can be combined with Science or Art subjects. The course is designed to address key ideas and debates in the world today, such as climate change, globalisation, urban regeneration and management of the world's resources. Geography develops the ability to combine scientific principles with economic awareness, environmental concern and an appreciation and tolerance of people. You will develop your own values, attitudes and opinions and have opportunities to develop team work and fieldwork skills.

How the Course is Examined

This course will be assessed with a written exam for units 1, 2 & 3. The assessment for Unit 4 will be a non-examined assessment (internally assessed and externally moderated)

Course Detail

There are 4 units of study for A level:

Unit 1: Dynamic Landscapes and Physical Systems and Sustainability

Tectonic processes and Hazards:

Coastal Landscapes: The Water and Carbon Cycles and Insecurity

Unit 2: Dynamic Places and Human Systems and Geopolitics

Globalisation: Shaping Places:

Superpowers: Global Development

Unit 3: Synoptic Investigation of a contemporary geographical Issue

Unit 4: Students complete an Individual Investigation of 3000-4000 words based on a fieldwork enquiry.



Job options

Jobs directly related to a Geography degree include:

- Cartographer
- Commercial/residential surveyor
- Environmental consultant
- Geographical information systems officer
- Planning and development surveyor
- Secondary school teacher
- Town planner

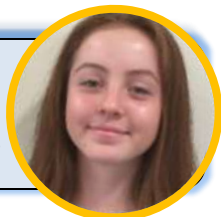
Jobs where your Geography degree would be useful include:

- International aid/development worker
- Landscape architect
- Logistics and distribution manager
- Market researcher
- Nature conservation officer
- Sustainability consultant
- Tourism officer
- Transport planner

2020 Student Profile: Phoebe

Other subjects: Biology, Sociology

Now Studying: Environmental Science, Northumbria



A Level History

Exam board: OCR

Why choose History?

It's really interesting! It teaches you about where you have come from and what lessons can be learnt from events of the past.

History is a highly-respected academic qualification. Even if you are dedicated to the sciences or to mathematics, History is an excellent additional option to take.

Valued by universities, it also goes well with most combinations of subjects to give a wide range of professional careers from Business to Law and Politics, Architecture to Journalism. University admissions tutors know that if you have studied History you have completed a challenging, rigorous qualification which requires high-level independent thinking. You will learn to write, think and study in a much more rounded way and broaden your talents.

Job options

Jobs directly related to a History degree include:

- Teaching in Schools
- Museums and Galleries
- Historic Houses, Heritage Sites and Organisations
- Record Offices, Archives, Libraries and Universities
- Archaeology, Architecture, Conservation and Horticulture
- National and Local Government, the Civil Service and the Diplomatic Service
- The Media and journalism
- Law, The Police, Armed Forces

Jobs where your History degree would be useful include:

- Academic librarian
- Archaeologist
- Archivist
- Editorial assistant
- Information officer
- Politician's assistant
- Solicitor



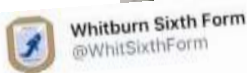
Holocaust memorial display by our @HolocaustUK ambassadors Emily & Richard today in Septimus Hall @WhitCofEAcad @PBTSAlliance



2020 Student Profile: Thomas

Other subjects: Politics, Literature

Now Studying: History, Glasgow



'I try to teach my sons to be understanding, to be tolerant, not to persecute people who have a different religion or different coloured skin' Janine Webber #JanineLive #HMD2018 @WhitCofEAcad

@WhitburnHistory 26/01/2018, 10:38



View Two

2 Retweets



Course Detail

The OCR A level specification for History allows you to follow 4 units of study, running in pairs, parallel to each other across Years 12 and 13.

You will study "Anglo-Saxon England and the Norman Conquest 1035-1107" for the British Study and Enquiry, and "Democracy and Dictatorships in Germany 1919-1963" for the Non-British Study.

The Thematic Study and Historical Interpretations section will be "Popular Culture and the Witch Craze of the 16th and 17th Centuries". You will also undertake a research question, in which you can choose an area of interest to study.

How the Course is Examined

This course will be assessed with 3 written examinations which contribute 80% to the overall award and 20% from a Historical Investigation.

Level 3 BTEC National Health & Social Care

Exam board: Pearson

Why choose Health and Social Care?

Whilst it is often in the news for its struggles with budget cuts and the challenges of an ageing population, the NHS remains one of our best-loved institutions and one of our biggest employers. Increasingly, the private sector has a role to play and employment opportunities may be with organisations in this sector.

This course will give you good background knowledge of the principles of care generally and also with patients who have specific conditions.

Students studying Health and Social Care may be offered the opportunity to go out on placement.

Health and Social Care would sit nicely with other A-Level options including Sociology, Psychology, Philosophy and English Language. We would expect students to progress to employment via Advanced Apprenticeship, or Higher Education with degrees in Nursing, Physiotherapy, Radiography, Occupational Therapy, Dental Nursing, Public Health, Health Studies and others being possible destinations.



Course Detail

The following are **compulsory** units for the Extended Certificate:

1. Human Lifespan Development (1.5 hr exam)
2. Working in Health and Social Care (1.5 hr exam)
3. Meeting Individual Care and Support Needs (Coursework assignment)

The following are **optional** units, assessed by coursework assignments and will be selected according to student interest and staff expertise:

- Sociological Perspectives
- Psychological Perspectives
- Supporting Individuals with Additional Needs
- Physiological Disorders and Their Care

2020 Student Profile: Preet

Other subjects: Psychology, Geography

Now Studying: Adult Nursing, Sunderland



Job options

Jobs directly related to a Health Studies degree include:

*Community development worker
Further education teacher
Health promotion specialist
Health service manager
Medical sales representative*

Jobs where your Health Studies degree would be useful include:

*Adult nurse
Counsellor
Occupational therapist
Physician associate
Primary care graduate mental health worker
Social worker
Youth worker*



How the Course is Examined

Both the Extended Certificate and Diploma qualifications will be assessed by two 1.5 hour written exams as well as continuous assessment via coursework assignments which are internally assessed.

The Diploma also includes a task involving independent research prior to a supervised assessment.



@WhitSixthForm



A Level Mathematics



@SixthFormMaths



Exam board: EDEXCEL

Why choose Mathematics?

The GCE in Mathematics is highly motivating. Mathematics at Advanced GCE is a course worth studying, not only as a supporting subject for the physical and social sciences, but in its own right. It is challenging but interesting.

You will build on work you covered at GCSE and be introduced to new ideas produced by some of the greatest minds of the last millennium.

An essential part of mathematical study is the challenge of analysing and solving problems and the satisfaction and confidence gained from achieving a 'correct' answer. You will also need to be able to communicate well in written work to explain your solutions.

Studying A-Level Mathematics is **essential** for those of you who wish to read a variety of Maths-related subjects at university, for example: Mathematics, Statistics, Physics and many Engineering courses. It can be useful for a range of other degree courses such as Architecture, Economics, Psychology and Accounting. Studying Mathematics also complements courses such as Medicine, Dentistry and Veterinary Science.

Course Detail

All students will study Pure Maths, Statistics and Mechanics.

Pure Maths provides students with a thorough grounding in the mathematical tools and techniques often needed in the workplace including major topics such as logarithms, differentiation/integration and geometric/arithmetic progressions.

Mechanics: this deals with the action of forces on objects.

Statistics: you will learn how to analyse data in order to arrive at conclusions.



Job options

Jobs directly related to a Maths degree include:

Actuarial analyst
Actuary
Chartered accountant
Chartered certified accountant
Data analyst
Data scientist
Investment analyst
Research scientist (maths)
Secondary school teacher
Statistician
Systems developer

Jobs where your Maths degree would be useful include:

Civil Service fast streamer
Financial manager
Financial trader
Insurance underwriter
Meteorologist
Operational researcher
Quantity surveyor
Software tester

2020 Student Profile: Eilidh

Other subjects: Chemistry, Physics

Now Studying: Mathematics with Study in Europe, Sheffield



How the Course is Examined

Paper 1 and 2 will include Pure Maths

Paper 3 will be in 2 sections.

Section A- Statistics.

Section B- Mechanics.

The duration of each paper is 2 hours.

A Level Further Mathematics



@SixthFormMaths



Exam board: EDEXCEL

Why choose Further Mathematics?

There are many reasons for you to take Further Mathematics:

- It is a challenging but rewarding and intellectually stimulating experience.
- It allows able mathematicians to explore new more sophisticated mathematical concepts.
- It enables you to stand out as an able mathematician to both Universities and potential employers.
- It assists greatly in the transition to Maths-related degree courses.

Those that opt for Further Maths will also follow the A level Mathematics course simultaneously and hence gain two separate qualifications. For some degree courses, such as Mathematics, Engineering and Computing Science, Further Maths would be a desirable, if not an essential, qualification.

It is possible to study AS Further Maths in addition to your three A Levels.

Course Detail

Compulsory Further Pure content:

- Proof
- Complex numbers
- Matrices
- Further algebra and functions
- Further calculus
- Further vectors
- Polar coordinates
- Hyperbolic functions
- Differential equations

Units Studied:

- Core Pure 1
- Core Pure 2
- Further Mechanics 1
- Further Statistics 1

2020 Student Profile: Akshay

Other subjects: Maths, Economics, Physics

Now Studying: Industrial Economics, Nottingham



How the Course is Examined
4 x 90 minute exams

Job options

Jobs directly related to an Accountancy and Finance degree include:

Accounting technician
Actuarial analyst
Business adviser
Chartered accountant
Chartered certified accountant
Chartered management accountant
Chartered public finance accountant
Company secretary
Forensic accountant
Stockbroker

Jobs where your Accountancy and Finance degree would be useful include:

Actuary
Data analyst
Data scientist
Economist
Licensed conveyancer
Management consultant
Purchasing manager
Retail banker
Tax adviser



Level 3 Certificate Core Maths

Exam board: EDEXCEL

Why choose Core Maths

Level 3 Mathematical Studies (Core Maths) is a subject designed to develop students' mathematical skills and thinking.

The additional skills and knowledge which it gives beyond GCSE level support other A Level subjects such as Psychology, Sciences and Geography. It is suited to those who have some mathematical ability but who do not have the interest or aptitude to study Mathematics at A level.

It applies mathematics to real life problems and issues, including Personal Finance.

How the Course is Examined

Paper 1

90 minute exam covering 3.1, 3.2 and 3.3

Paper 2

One hour 30 minute exam covering **one** of the following three areas:
Statistical Techniques
Critical Path and Risk Analysis
Graphical Techniques

2020 Student Profile: Nathan

Other subjects: Biology, Chemistry, Geography

Now Studying: Medicine, Anglia Ruskin



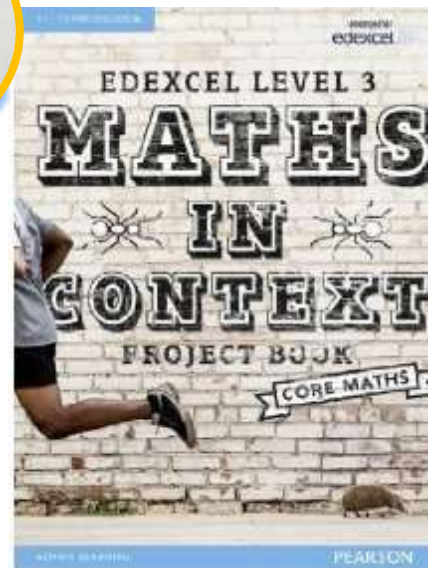
Course Detail

Compulsory content:

- 3.1 Analysis of data
- 3.2 Maths for personal finance
- 3.3 Estimation
- 3.4 Critical analysis of given data and models

Optional Components: (2 of the following)

- 3.5 The normal distribution
- 3.6 Probabilities and estimation
- 3.7 Correlation and regression
- 3.8 Critical path and risk analysis
- 3.9 Expectation
- 3.10 Cost benefit analysis
- 3.11 Graphical methods
- 3.12 Rates of change
- 3.13 Exponential functions



@WhitSixthForm



A Level Music

Exam board: EDEXCEL

Why choose Music?

A level Music develops knowledge and understanding of genres and periods of musical history. It allows you to develop creatively as both a performer and a composer. The course works well alongside external accreditations including ABRSM examinations which carry UCAS tariff points towards university entrance.

We are able to offer instrumental music tuition across all instrumental families. The academy enters students for external examinations such as ABRSM practical and theory, Rock School and RGT guitar.

Extra-curricular opportunities include WCEA Orchestra, Choir, Big Band, and various smaller instrumental and vocal ensembles. These groups regularly perform in music concerts within school and also at external venues.

The GCE course is excellent preparation for higher education courses in music.

Course Detail

Performance skills: To perform a recital on voice or an instrument in any style of the candidate's choice.

Composition: Students compose pieces to briefs set by Edexcel as well as learning about compositional techniques and advanced harmony.

Listening and Understanding: Aural and analytical skills are studied through selected instrumental and vocal pieces from the Edexcel *New Anthology of Music* and wider listening.



Job options

Jobs directly related to a Media degree include:

Music therapist
Musician
Private music teacher
Secondary school teacher
Sound technician, broadcasting/film/video

Jobs where your Media degree would be useful include:

Arts administrator
Broadcast engineer
Community arts worker
Event manager
PPC specialist
Radio broadcast assistant
Radio producer
Theatre stage manager

How the Course is Examined

Composition & Performance = 60%
Developing Knowledge and Understanding = 40%

2020 Student Profile: Jasmine
Other subjects: Literature, Maths
Now: in Year 13 applying for Music courses at University.



A Level Physical Education

Exam board: OCR

Why choose Physical Education?

Studying A Level Physical Education will give you a fantastic insight into the amazing world of sports performance. Not only will you have the chance to perform or coach a sport through the non-exam assessment component, you will also develop a wide-ranging knowledge into the 'how' and 'why' of physical activity and sport.

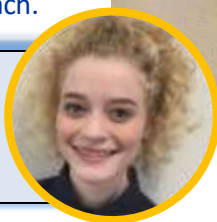
The combination of physical performance and academic challenge provides an exciting opportunity for students.

A Level PE can allow entry into higher education and is vital for sport-related degree courses such as Sport and Exercise Science, Sports Studies and Physical Education. These degrees could in turn lead to a range of career opportunities such as PE teacher, sports psychologist, sports scientist, leisure and recreation manager, sports administrator, sports nutritionist, performance analyst, sports development manager, fitness professional, physiotherapist and conditioning coach.

2020 Student Profile: Hannah

Other subjects: Biology, Physics, EPQ

Now Studying: Sport & Exercise Science, Newcastle



Job options

Jobs directly related to a Sport Science degree include:

- Exercise physiologist*
- Fitness centre manager*
- Secondary school teacher*
- Sports administrator*
- Sports coach*
- Sports development officer*
- Sports therapist*

Jobs where your Sport Science degree would be useful include:

- Event manager*
- Health promotion specialist*
- Higher education lecturer*
- Outdoor activities/education manager*
- Sport and exercise psychologist*



WhitburnPE @PEWhitburn

Our A level students loved welcoming @richardnugent into our sixth form to deliver a workshop on sports psychology + leadership. Outstanding advice and practical examples + his depth of research in both fields was evident throughout. Thanks very much @richardnugent @WhitSixthForm

Congratulations @WhitSixthForm Students Ales and Kate on their awards @NorthDurhamOFA Awards last night! Well Done Girls 🏆👏



Course Detail

Students will cover:

- Component 1: Physiological Factors Affecting Performance (Anatomy and Physiology/ Exercise Physiology/Biomechanics)
- Component 2: Psychological Factors Affecting Performance (Skill Acquisition/Sports Psychology)
- Component 3: Socio-cultural and Contemporary issues (Sports, society and technological influences)
- Component 4: Performance within Physical Education (Performance or coaching practical/EAPI)

How the Course is Examined

- Component 1: 2 Hour written exam (30%)
- Component 2: 1 Hour written exam (20%)
- Component 3: 1 Hour written exam (20%)
- Component 4: NEA – internally assessed and externally moderated (30%)



@whitty_lope



A Level Philosophy and Ethics



@Whitburnphilos1



Exam board: OCR

Why choose Philosophy and Ethics?

This is a course that will guide you to think about, analyse, reflect on and critically evaluate your own beliefs and assumptions, as well as those of other people and society as a whole. You will be asked to discuss BIG questions; do we have free will? Is Euthanasia ever acceptable? Is there such a thing as right and wrong? What is the purpose of life?

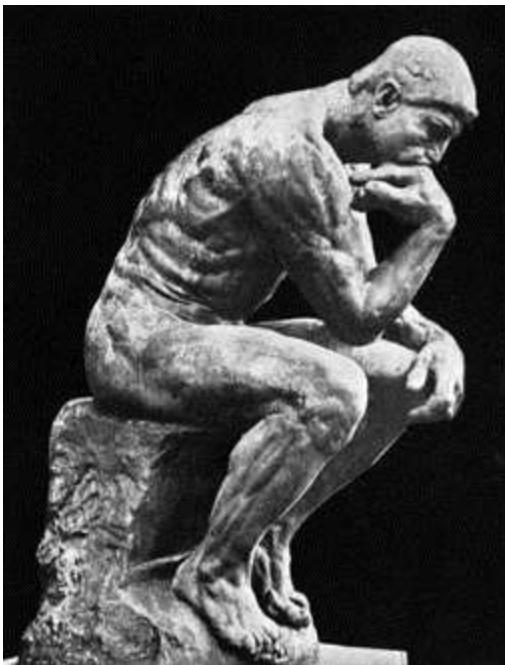
Philosophy is highly regarded by universities and may be used for entry onto Philosophy and many other degrees courses.

Universities and employers alike value the skills such as critical thinking and debate that are developed during the study of this discipline.

Students who study A-level Philosophy and Ethics often go on to have careers in legal, medical services, journalism and publishing, education, social work, media work and politics.

How the Course is Examined

This course will be assessed with a written examination for each of the 3 components: Philosophy, Ethics and Developments in Religious Thought.



Course Detail

There are 3 components of study across Years 12 and 13.

In each year you will study a unit of topics relating to Philosophy of Religion and a second unit of topics relating to Religious Ethics and Developments in Religious Thought.

Year 12 topics include Ancient Greek influence on the Philosophy of Religion, Applied Ethics – Euthanasia and Business Ethics.

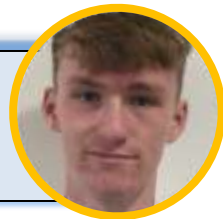
Year 13 topics include the Twentieth Century perspectives on religious language and applied ethics topics such as sexual ethics.



2020 Student Profile: Oscar

Other subjects: Politics, Sociology

Now Studying: Philosophy, Leeds



Job options

Jobs directly related to a Philosophy degree include:

*Further education teacher
Higher education lecturer
Secondary school teacher*

Jobs where your Philosophy degree would be useful include:

*Barrister
Civil Service fast streamer
Health service manager
Local government officer
Marketing executive
Newspaper journalist
Paralegal
Psychotherapist
Recruitment consultant
Solicitor
Stockbroker*

A Level Physics



@WhitburnPhysics



Exam board: AQA

Why choose Physics?

Physics has long been thought of as the most fundamental of all sciences, with studies ranging in scale from galaxies to sub-atomic particles. A level Physics is the study of everything in the physical world and how it works and is full of exciting questions and opportunities to prove theories that are still in doubt. Physics is never far from the news and has been again highlighted with the teleportation of photons to space which could lead to the development of an ultra-secure quantum internet.

There is a wide range of careers possible with A level Physics, ranging from medical physicist to oceanographer, naval architect to audio technician. There are also engineering careers too; flight, mining, electrical/electronics, mechanical, aeronautical and agricultural.

University degree courses requiring or preferring A level Physics include Physics, Engineering and Geographical Sciences, to name but a few.

Job options

Jobs directly related to a Physics degree include:

*Geophysicist/field seismologist
Higher education lecturer
Metallurgist
Nanotechnologist
Radiation protection practitioner
Research scientist (physical sciences)
Secondary school teacher*

Jobs where your Physics degree would be useful include:

*Investment analyst
Meteorologist
Nuclear engineer
Operational researcher
Patent attorney
PPC specialist
Systems developer*

How the Course is Examined

This course will be assessed as an A Level at the end of Year 13.

There are three written exams.

2020 Student Profile: Charlotte

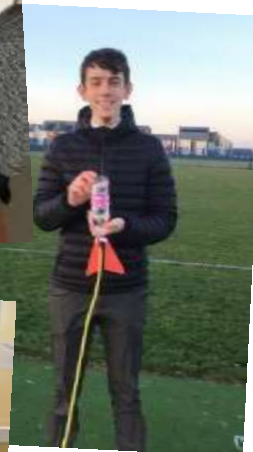
Other subjects: Maths, Chemistry, Physics

Now Studying: Physics, Durham



Course Detail

Whilst studying this subject you will gain a greater understanding of the basic principles of Physics and learn more about topics studied at GCSE. You will also learn the importance of Newton's theory of gravitation and Einstein's theory of special relativity. In Year 13 you will have the opportunity to choose an area of study that you are most interested in, whether it is astrophysics, medical physics, engineering, electronics or the great 'turning points' in Physics. There may be opportunities for fieldwork, as well as the possibility of a residential visit.



A Level Politics

Exam board: AQA

Why choose Politics?

Recent years have seen some momentous moments in politics, from Brexit to Donald Trump's unexpected victory in the 2016 US presidential election to the internal power battle in the Labour Party.

Politics affects everything we do in life; the Politics course at A-Level takes a look at the major functions of government and politics in Britain and beyond. The political aspect covers the major components of the democratic process; parties, pressure groups and elections. Students will develop their critical thinking skills and enhance their ability to interpret, evaluate and comment on the nature of politics. They will acquire knowledge of the structures of authority and power within the political system of the United Kingdom and beyond and will be encouraged to think and debate more widely about how other political systems may differ.

Students can progress to study Politics at university. From there you might become a researcher, join local or national government or even start on the path to become a future Prime Minister! But there are other job options too, such as Journalism, Media, teaching or work in the legal profession.



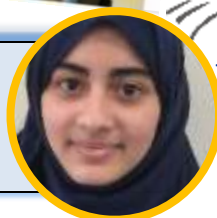
Whitburn Sixth Form @WhitSixthForm
Future lawyers and policy-makers considering votes at 16 and how bills become law. @WhitCofEAcad



@PoliticsWhitbu1



2020 Student Profile: Raneem
Other subjects: Language, Sociology
Now Studying: Law, Sunderland



Course Detail

UK Government and Politics: the constitution, parliament, Prime Minister and the executive, the judiciary and devolution. Political Participation - democracy and participation, political parties, electoral systems, voting behaviour and the media and the EU.

US Government and Politics and Comparative Politics: Constitution and federalism, US congress, US presidency, US Supreme Court, democracy and participation, civil rights. Comparative politics - UK and US

Political Ideas: Core Political Ideas - conservatism, liberalism, socialism. Additional political idea - anarchism, ecologism, feminism, multiculturalism, nationalism.

Job options

Jobs directly related to a Politics degree include:

*Civil Service fast streamer
Government social research officer
Politician's assistant
Public affairs consultant
Public relations account executive
Social researcher*

Jobs where your Politics degree would be useful include:

*Charity officer
Detective
Diplomatic service officer
Forensic accountant
Human resources officer
Local government officer
Market researcher
Marketing executive
Newspaper journalist
Public relations officer
Stockbroker*

How the Course is Examined

This course will be assessed with a written examination for each of the 3 components.

A Level Psychology



@WhitCofEpsych



Exam board: AQA

Why choose Psychology?

Psychology is the study of human behaviours using scientific methods to both analyse and explain different human behaviours. If you are fascinated by the idea of understanding the brain and if you want to grasp the complexities of human behaviour then A level Psychology is for you.

This well-recognised course offers insight into what makes us who we are and provides the opportunity for you to develop both socially and academically. In lessons, you may be exploring various areas to do with cognitive behaviour, developmental and even biological psychology by focusing on issues such as memory, child and adult developmental stages and psychological research methods.

Future careers include forensic scientist, criminologist, psychologist, educational psychologist, teaching, NHS and public services.



Course Detail

Compulsory Content:

Social influence, Memory, Attachment, Psychopathology, Approaches in Psychology, Biopsychology, Research methods, Issues and debates in psychology

Optional content:

Relationships, Gender, Cognition and development, Schizophrenia, Eating behaviour, Stress, Aggression, Forensic psychology, Addiction

2020 Student Profile: Jess

Other subjects: History, Sociology, EPQ

Now Studying: Psychology, Leeds

How the Course is Examined

3 written examinations: all papers include multiple-choice questions, short answer and extended writing.

Each exam is worth 33% of the final grade.



Max is being hooked up to a brain scanner to measure brainwaves in powerlabs session. #psychology #brainawarenessweek ift.tt/2pgn

15/03/2018, 12:08

1 Retweet 1 Like



WhitburnCofEAcademy @WhitCofEAcad

Y12 Psychologists are out today at Newcastle University taking part in a number of experiments. This is Connie taking part in an experiment about close eye contact with someone you don't... [instagram.com/p/Bk2G_ZUjDxi/...](https://www.instagram.com/p/Bk2G_ZUjDxi/)

05/07/2018, 10:48

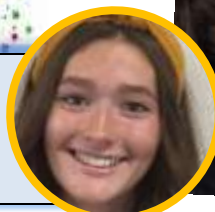
Job options

Jobs directly related to a Psychology degree include:

- Clinical psychologist
- Counselling psychologist
- Educational psychologist
- Forensic psychologist
- Further education teacher
- Health psychologist
- High intensity therapist
- Occupational psychologist
- Primary care graduate mental health worker
- Psychological wellbeing practitioner
- Sport and exercise psychologist

Jobs where your Psychology degree would be useful include:

- Advice worker
- Careers adviser
- Counsellor
- Detective
- Human resources officer
- Market researcher
- Play therapist
- Psychotherapist



A Level Sociology

Exam board: AQA

Why choose Sociology?

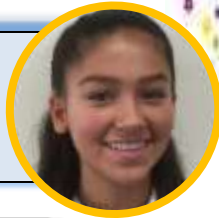
Sociology is the study of how society is organised and how we experience life and it is becoming a more and more popular subject. It is an interesting and demanding academic subject which will equip you with a range of skills; you will learn to think critically, to question common-sense assumptions, to solve problems, to work independently and as part of a group and to write clearly-structured analytical essays. You will debate the issues that are important in our society and analyse and evaluate the sociological theories and research around topic areas such as the family, crime and the mass media. You should be interested in current affairs and social issues.

If you have an interest in understanding how the world around you works, and enjoy critical thinking and exploring ideas from different viewpoints, then Sociology would be a good choice for you! All of this is excellent preparation for university or for a whole range of careers including teaching, social work and the police force.

2020 Student Profile: Amelia

Other subjects: Art, Psychology

Now studying: Sociology, Leeds



How the Course is Examined

Three 2 hour written examinations including short answers, extended writing and essays.



@Whitburnsocio



Whitburn Sociology
@Whitburnsocio11

First meeting of the sociology society starts on the 15th of January where we will be watching TED talks and looking at recent news related to sociology. It starts at 1:00 in s13!!!!
@WhitSixthForm



Course Detail

You will cover areas such as Socialisation, Families and Households, Education and Research Methods.

Within these topics you will be required to study, amongst others; divorce and its effects, the social construction of childhood, feminist perspectives on the family and education and to understand the theories of the founders of sociology such as Emile Durkheim and Karl Marx.

In addition to lessons, you will be directed to contribute to your understanding of sociological theories and research methods by wider reading of textbooks, newspapers and journals, and keeping a portfolio of relevant news articles and TED Talks.

We also encourage students to create their own revision materials that they will use as seminars to teach the rest of the class.

In the second year of the A level, you will be required to study Crime and Deviance and Beliefs in Society, as well as a more in-depth study of Sociological Theories and Methods.

Job options

Jobs directly related to a Sociology degree include:

*Family support worker
High intensity therapist
Primary care graduate mental health worker
Probation officer (Northern Ireland)
Social worker*

Jobs where your Sociology degree would be useful include:

*Adult guidance worker
Advice worker
Careers adviser
Charity officer
Community development worker
Counsellor
Detective
Play therapist
Volunteer coordinator
Youth worker*

A Level Spanish



@WhitSixthForm



Exam board: AQA

Why choose Spanish?

Speaking a modern foreign language is an invaluable tool in today's modern world, "the global village". Recognised as a robust academic qualification, A Level Spanish is highly valued by universities. It can lead to a Spanish degree, or can also be studied in combination with another language, English Literature or International Business Management.

Spanish is the second most widely-spoken language in the world after Mandarin, so the subject offers huge geographical, cultural and historical scope alongside the ability to become linguistically proficient. The language skills acquired will allow you to access a world of exciting literature and films.

If you enjoyed GCSE Spanish you will relish the challenge of A level.

Studying AS over two years may be possible as an 'extra' to your three other A Levels.

Job options

Jobs directly related to a Modern Languages degree include:

*Interpreter
Secondary school teacher
Translator*

Jobs where your Modern Languages degree would be useful include:

*Broadcast journalist
Detective
Diplomatic service officer
English as a foreign language teacher
International aid/development worker
Logistics and distribution manager
Marketing executive
Patent examiner
Sales executive
Tour manager*

Course Detail

Throughout the two years, four topics, taught through the means of listening, reading, writing and speaking, as follows:

Aspects of Hispanic society: current trends (Year 12)

Multiculturalism in Hispanic Society (Year 13)

Artistic culture in the Hispanic world (Year 12)

Aspects of political life in the Hispanic world

As well as:

Literary texts and films

Grammar

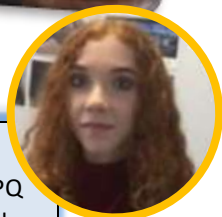
How the Course is Examined

3 papers:

Listening, reading and writing
(including translation)

Writing (essay based on the
text or film studied)

Speaking (based on 4 subthemes)



Student Profile: Alex

Other subjects: Art, Literature, Language, EPQ

Now studying: English Literature at Cambridge University

A Level Theatre Studies

Exam board: AQA

Why choose Theatre Studies?

This course can be studied by students who wish to explore theatre and literature through:

- Performance
- Costume Design
- Set Design
- Directing

It is therefore also suitable for those who may not want to be on stage as a performer, but enjoy the artistic and creative side of theatre.

It is also complementary to English Literature; we study two set tasks and the exam is open book.

We also explore theatre through analysis of performance, so expect trips out to watch musicals, plays and theatre in education.



How the Course is Examined

One written exam (3 hours, open book) – 40%
Two questions on set texts
One question on live theatre visit

Creative Drama – 30%

One performance (in role as performer OR designer OR director), centre assessed and moderated by AQA, A working notebook

Extracts – 30%

Three extract performances (in role as performer OR designer OR director)
One extract assessed by AQA examiner
A reflective portfolio.

Course Detail

The course has three components:

1. Drama and Theatre
 - Set plays
 - Live theatre production
2. Creating Original Drama
 - Creating devised drama
 - Performing devised drama
3. Making Theatre

Job options

Jobs directly related to a Performing Arts degree include:

Actor
Community arts worker
Dancer
Drama therapist
Music therapist
Theatre director

Jobs where your Performing Arts degree would be useful include:


Arts administrator
Broadcast presenter
Further education teacher
Higher education lecturer
Secondary school teacher
Theatre stage manager



@WhitSixthForm



Whitburn Sixth Form · 16/03/2020
5-4 to Sixth Form students... staff's poor form continues for another year
#BringBackDucks



Whitburn Sixth Form · 10/09/2020
Great to welcome 120 fantastic new students in to the Whitburn Sixth Form Community today. Staff very impressed on first impressions: you are sure this cohort will go far & achieve great things with us. We are asking all to follow guidelines & keep each other safe.
@whitburnhealth

Whitburn Sixth Form · 22/09/2020
You may think this (seen on FB) an extreme example but it highlights why we're asking you to 'do your bit' - wear your mask when standing, social distance where possible, wash hands regularly, keep left, sit offset etc to protect others. Thank you to all for supporting 🙏

Whitburn Sixth Form · 10/10/2020
Annual #MercyWalk for #CofEcharity Over Cleaton Hills this afternoon. @WhitCofEAcad

Whitburn Sixth Form · 15/10/2020
Futures in Science event tomorrow. Friday with @ucas_online lots of personal statement tips and opportunities to meet people.
@CherryWhitburn19 @CherryWhitburn18 @WhitburnSci @WhitburnGeography @Whitburncareers

Whitburn Sixth Form · 16/10/2020
Futures in Science event tomorrow. Friday with @ucas_online lots of personal statement tips and opportunities to meet people.
@CherryWhitburn19 @CherryWhitburn18 @WhitburnSci @WhitburnGeography @Whitburncareers

Whitburn Sixth Form · 20/10/2020
Thanks to everyone in Year 12 who has signed up to attend the online meeting tomorrow about our @walesnational exhibition to @RoyalSoc Tees. For the link to join the meeting at 5.30 Wednesday. See here for more info:

Whitburn Sixth Form · 28/09/2020
What a fabulous day for Y13 to get out and do some Biology Fieldwork! 🌳🌳🌳
@WhitCofEAcad @300DaysWild @nationaltrust @WildlifeTrusts @NCLDoveMarine @BiologyMarine

Whitburn Sixth Form · 30/09/2020
Can anyone connected to the Sixth Form community help current student Amelia smash her fundraising target?

Whitburn Sixth Form · 16/10/2020
Thanks to those who wore yellow today for @YoungMindsUK - slightly smaller group photo this year, but you know, there's a pandemic on... #ShareYourYellow @CharityHinge

Whitburn Sixth Form · 14/10/2020
Defuse situations more gambling very accessible and too easy to get in too deep. If you're losing control, speak out and get help: Gambling addiction has serious professional opportunities, says Sporting Chance.

Whitburn Church of England Academy Expedition to Nepal 2022...
#Nepal2022

Whitburn Sixth Form · 05/07/2020
Year 13 student @drew_smithey has kept busy during lockdown by programming this impressive robot. Recently took part in a trip to Star City, Moscow. This young man is destined for great things...
@WhitCofEAcad @northweststep @M13Chamber

Whitburn Physics · @WhitburnPhysics
Do we live in a simulation and ultimately, does the answer to that question even matter? That is what we discussed at physics society.

Whitburn Sixth Form · @WhitSixthForm
Basic uni/independent living survival skills day for year 13...competitive ironing sewing and polishing...13F vs 13T...Wilson vs Amin...results shortly...

Bank of England NE · @BoENorthEast
Today I met @WhitSixthForm students for a chat about economics. On top of the great questions I got from students... a beautiful location for a school! Probably the best views of any school I've been to. @WhitCofEAcad

Whitburn Sixth Form · @WhitSixthForm
Delighted to have the excellent Chrissi back with us this morning to talk through LGBTQ+ issues including definitions, gender unicorn, supporting others, equality act and more 🏳️‍🌈👏

Whitburn Sixth Form · 14/10/2020
New driver? Learning? Don't be a space invader! Always be mindful that your actions behind the wheel affect others.
@OpDragon @RoadSenseCommonSense

Whitburn Sixth Form · 10/10/2020
134 people were killed or seriously injured as a result of tailgating in 2018.

Whitburn Sixth Form · 10/10/2020
Northern Pride Online | Northern

Whitburn Sixth Form · 01/10/2020
If you would like to talk to someone in Sixth Form, there will always be someone to listen; just pop in to the office. This opportunity may be of interest.

PAPYRUS · @PAPYRUS
If you have experience of self-harm and have used social media to discuss, share or view self-harm content, then the Uni of Leeds would like to hear from you. Please get in touch via umgko@leeds.ac.uk

Whitburn Sixth Form · 25/10/2020
Our own clothes day for Harvest 2020 raised £376.10 for The Key Project @KeyProject. Thanks to everyone for their donations! If you want to add any further donations online, you can do so at <https://www.keyproject.org.uk/donate/> #Harvest2020 #OwnClothesDay @thekeyproject

Whitburn Sixth Form · 10/06/2020
Lovely to arrive at school to find this lovely package from @mmsms @whitburn6252. Thank you! You may remember an evening this story recently. There is one for you @GemmaKirston @TheWhitburncareers and @Alicia_Sherwin_PHG

Whitburn Sixth Form · 19/09/2020
Be an encourager...
Be an encourager.
The world has plenty of critics already.
Dave Willis

Whitburn Sixth Form · 06/06/2020
Our U19 Football season unfortunately came to a premature end, but we were well on course to have our most successful season ever. We were still in two semi finals and it was looking like we would finish runners up in the league - our highest finish.
@AFCWhitburn

Whitburn Sixth Form · 02/10/2020
Comes around fast! Another world's biggest coffee morning to raise funds for @macmillanacancer. Thanks to all who contributed, purchased and to reps for organising!

Whitburn Sixth Form · 08/10/2020
Our @CharityReps are encouraging us all to wear a yellow accessory or yellow item as part of our Dress Code this Friday to raise awareness for young peoples' mental health and the fabulous @YoungMindsUK. Please get involved!

Whitburn Sixth Form · 04/08/2020
Great news for another of our alumni. Well done Lauren!

Lauren Halfigan · 04/08/2020
Third year of uni has been an absolute rollercoaster for me so to be graduating with a first class degree is the absolute best news 🥰 hard work and determination definitely pays off!

Whitburn Sixth Form · 19/03/2020
Y13 and Y11: you have worked incredibly hard, sat mocks & responded positively whatever the results. We have lots of Qs that need answers but we have faith in you and will try to ensure you get what you worked for. Schools shut down prompts exams clarity

Whitburn Sixth Form · 15/08/2020
Whatever your results day brings, remember we will always be proud of you as the group who dealt with what no previous year group has had to. You dealt with it very well and your hard work and efforts prior to lockdown we hope will be recognised today.

Whitburn Sixth Form · 05-08 15/08/2020
Coronavirus: Answers promised after school shutdown confusion
bbc.co.uk

Whitburn Sixth Form · 08/12/2017, 11:19
Sixth Form students @WhitSixthForm are having lot of fun in Cambridge! Kings College Cambridge and @ChurchillCol #WorldClass

Some of our Twitter highlights from 2019-20



@whitburnsixthform @WhitSixthForm