

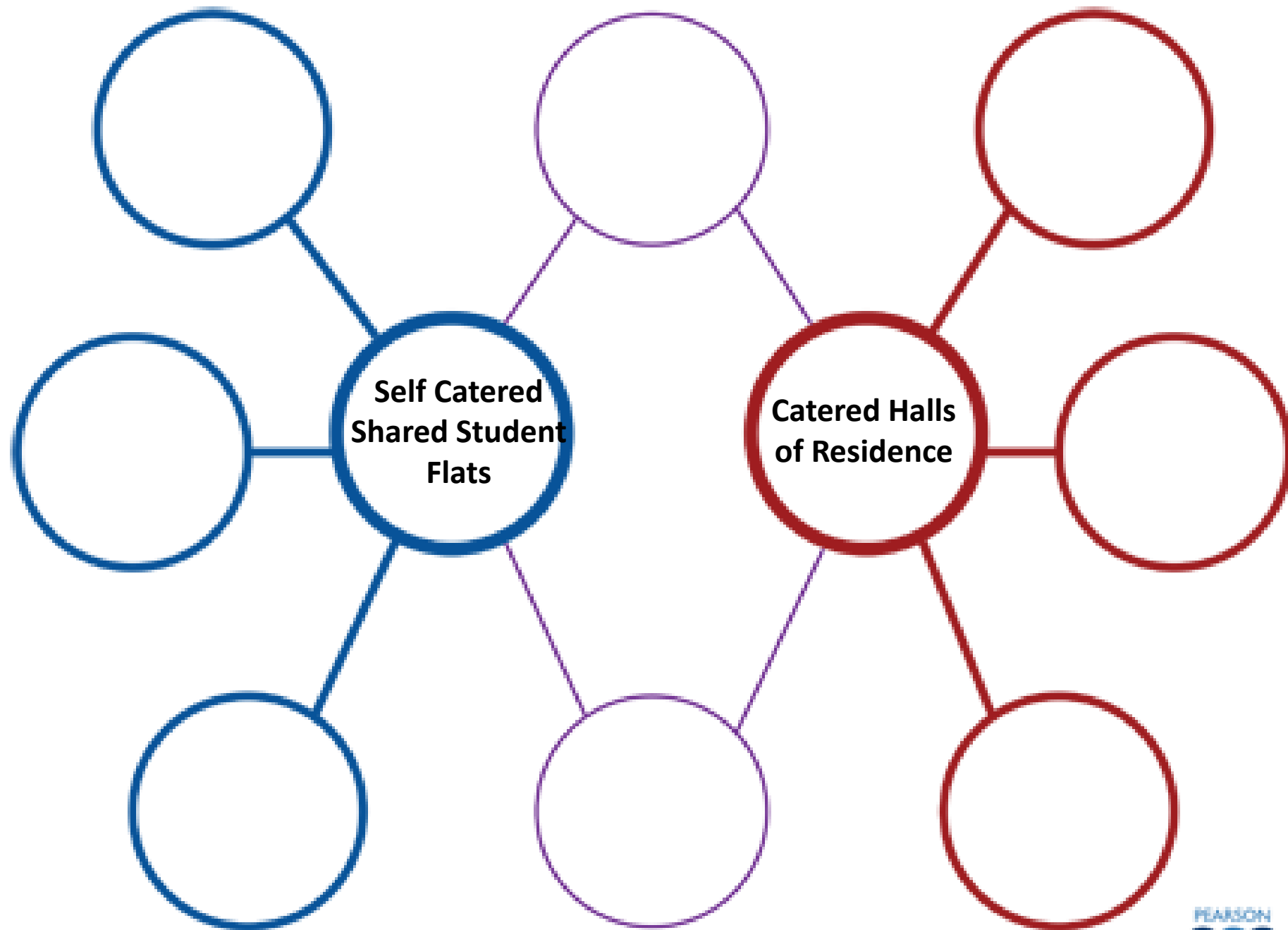
STUDENT HOUSING AND CONTRACTS



For the purposes of this session we will take 'student accommodation' to mean either just that, or a flat or shared house you may rent with fellow young professionals as you embark upon an apprenticeship or School Leaver Programme.

What different types of accommodation can you think of for a student?
What are the pros and cons of each?





Review...

Catered Halls

Pros – sociable, convenient, easy to budget, guaranteed hot meals every day

Cons – little opportunity to develop cooking skills, lack of freedom to eat when you want (lie in and you'll miss breakfast!)

Self-Catered Halls

Pros – learn how to cook, freedom to eat when you want

Cons – washing up, cooking, food shopping, sharing a messy kitchen, having food nicked by flat mates

Private Accommodation

Pros – stay in a swanky apartment in a cool part of town

Cons – expensive, big deposits, ripped off, problems with landlord/flatmates

Staying at home

Pros – washing, cooking, cleaning sorted!

Cons – lack of freedom, more difficult to make new friends?

Discuss... Which one is right for you? Why?

Work through the eight short tasks, making notes on your record sheet which you can take away with you.

Remember to bookmark any useful sites you visit during the session.

1 Which? University

<http://university.which.co.uk/advice/student-accommodation>


- Check out the Which? Magazine guides to accommodation types you may consider ([#1 Uni Halls](#), [#2 Private accommodation](#), [#3 Private Halls](#) and [#4 Living at Home](#))
- Draw up pros and cons for any types of accommodation under consideration.
- Play around on <http://www.studentpad.co.uk/> to get a feel for some of the options in your destination city/town (*NB this does not constitute a recommendation by Whitburn Academy!*)

<https://www.thecompleteuniversityguide.co.uk/universities/>

- Check out your most likely university (or if not applying, choose the main uni in the city you will spend most time in).
- Click on the 'Student Life' then 'Living Here' tabs.
- What do you learn from this?
- What is the typical annual cost of a) uni-owned and b) private accommodation?

University Profiles

Comprehensive information about UK universities



Research league table performance over time, get key information.

Also fees & finance, accommodation, courses, sport, international, postgraduate, map & crime hot spots.

3

[Your Guide to Student Tenancy Agreements | Here Student Living](#)

- What types of contracts are available?
- What are the pros and cons of each?
- What is a break clause?

Here!



4

[Awards | Global Student Living \(gsl.news\)](#)

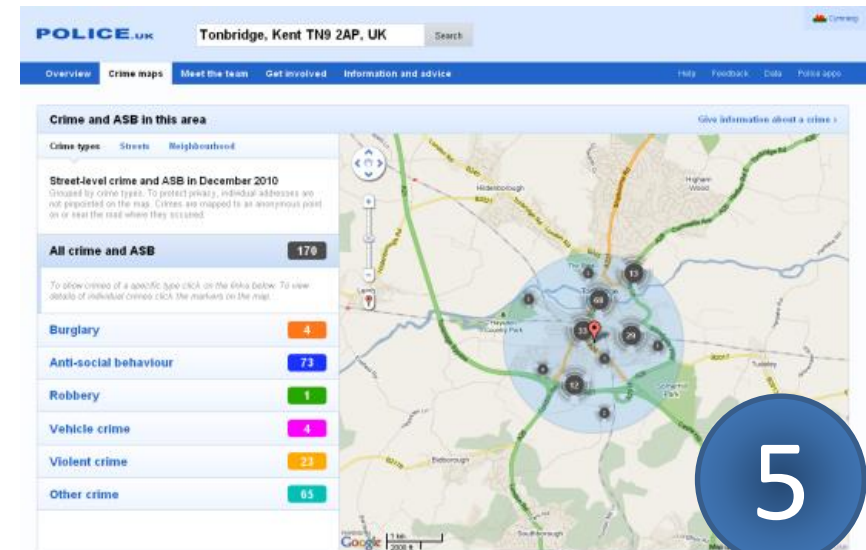
Take a look at the winners of the National Student Housing Survey Award Winners 2022.

Are any of these winners based in your destination town or city?

Do any of the housing companies who were recognised have properties in your town or city?

[Police.uk Your Area](#) or [UK Crime Stats](#)

- Enter city/address of halls
- Explore crime map, types of crime
- Are there areas of the city to avoid/some accommodation in worse areas than others?
- Burglary, robbery and assault are considered the crimes most likely to affect students. Look again with a focus on this type of crime.
- Compare with home address?



5

6

Student bills – Setup, compare and split

List the bills you may have to pay.

From the info on the website, which method do you think is best for splitting the bills and why?

How could bills impact your credit rating?

**SAVE
THE
STUDENT!**

Saving students money since 2007

7

Money
Super
Market

6

Simple rules to stretch your
student budget



Contents Insurance

What is contents insurance likely to a) cover? b) not cover?

Are your belongings covered by your parents' home contents insurance?

What are 'exclusions'?

8

THE
BEST 2016/17

STUDENT ACCOUNTS



Student Bank Accounts

Read the advice on student bank accounts.

Which account with which bank currently seems most attractive to you and why?

My Destination Town or City is

Task 5

Any areas/halls to avoid based on crime stats?



Task 1

* Delete as applicable

Option 1 : #1 Uni Halls / #2 Private Accommodation / #3 Private Halls / #4 Living at Home*	Vs	Option 2: #1 Uni Halls / #2 Private Accommodation / #3 Private Halls / #4 Living at Home*

Task 6

Best method to split the bills...

Task 2

Typical annual cost of...

Uni-Owned..

Private..



Vs



Task 7

My stuff will be:

- ☐ Covered on parents' policy
- ☐ Covered by basic policy
- ☐ I'll need additional insurance for...

.....
.....
.....

Task 8

Best bank account for me:

Because..

Task 3

Task 4

Award winners in my town are:



Contract Type	Main advantage	Main drawback
What is a 'break clause'?		